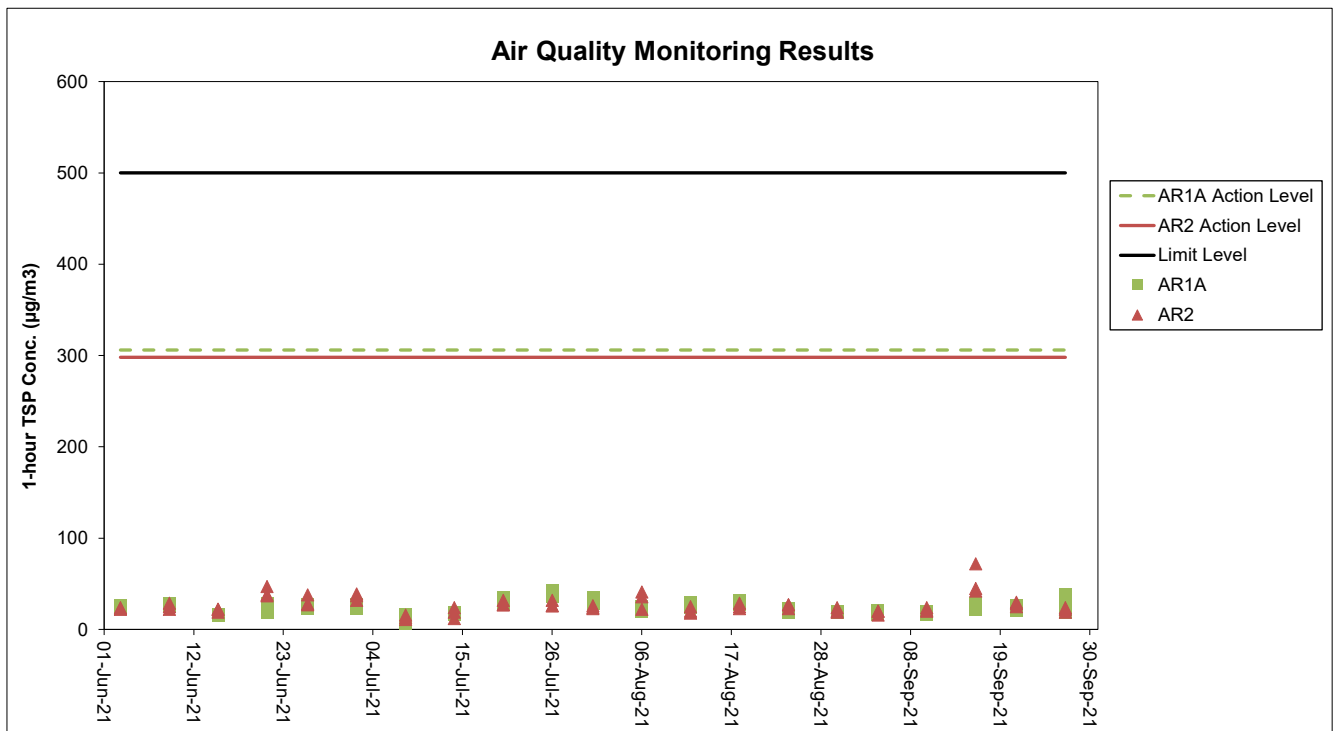


Appendix C. Monitoring Results

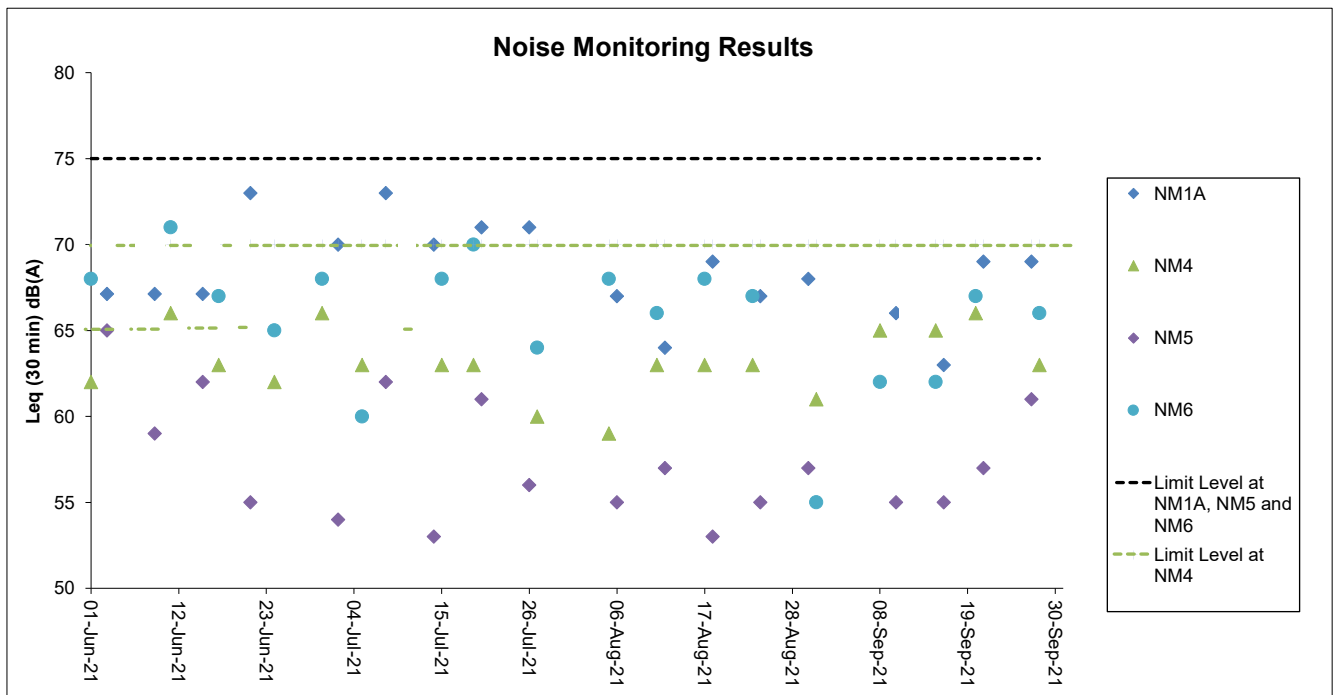
Air Quality Monitoring Results



Notes:

1. The key activities of the Project carried out in the reporting period included reclamation works and land-based works. Works in the reclamation areas included marine filling, seawall and facilities construction, together with runway and associated works such as bored piling for approach lights. Land-based works on existing airport island involved mainly airfield works, foundation and substructure work for Terminal 2 expansion, modification and tunnel work for Automated People Mover (APM) and Baggage Handling System (BHS), and preparation work for utilities, with activities include site establishment, site office construction, road and drainage works, cable ducting, demolition, piling, and excavation works.
2. General weather condition during monitoring ranged from sunny to cloudy. Detailed meteorological conditions can be referred to Table 2.3 of this Report and corresponding Monthly EM&A Reports.
3. QA/ QC requirements as stipulated in the EM&A Manual were carried out during measurement.

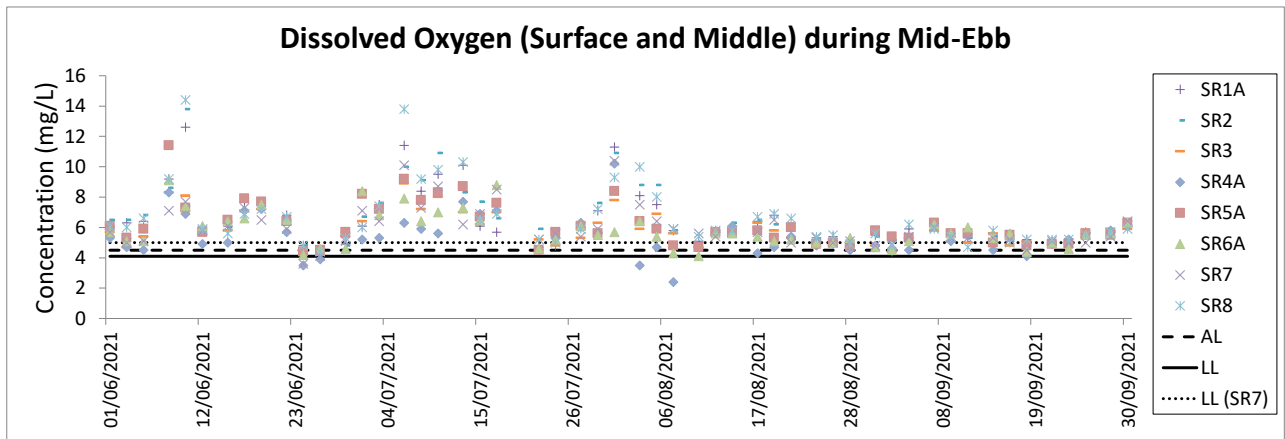
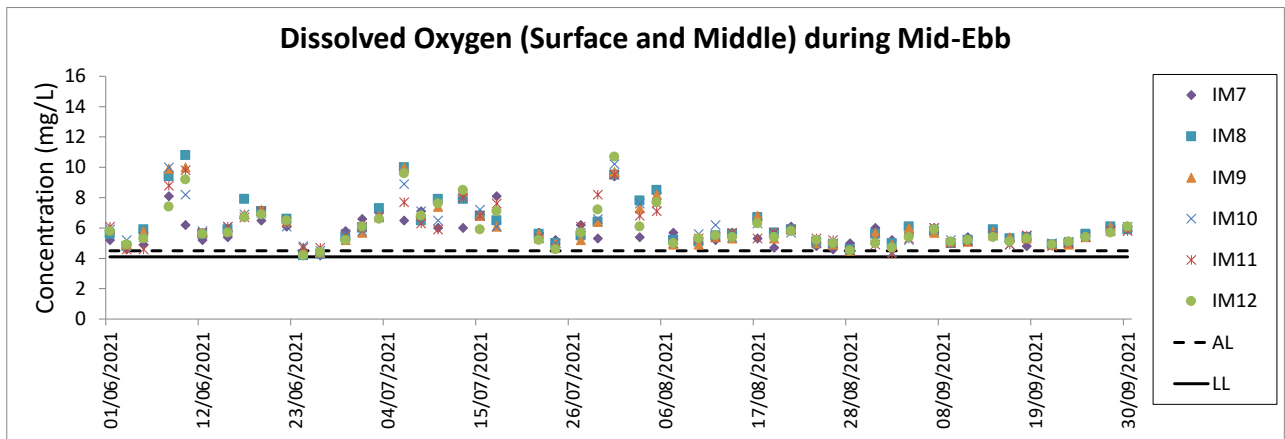
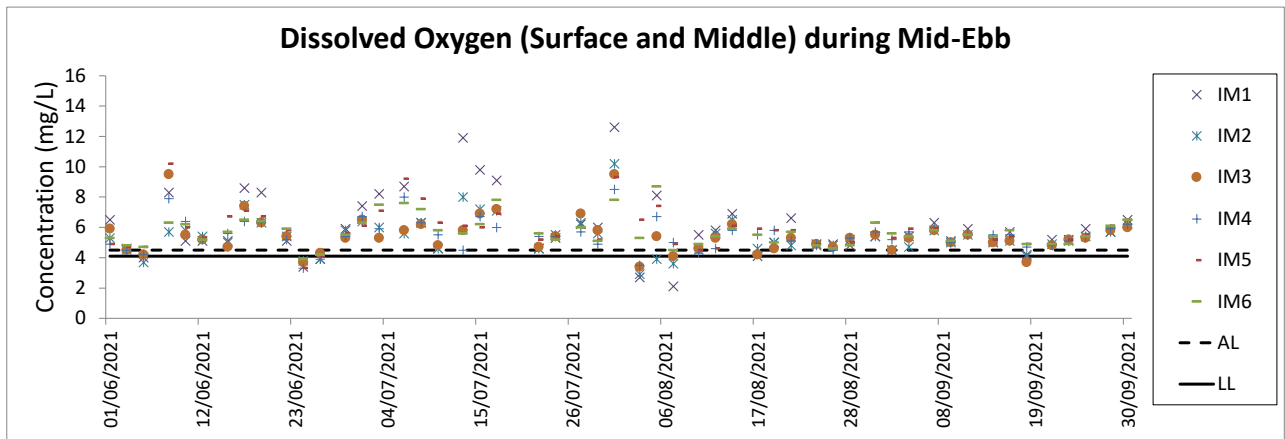
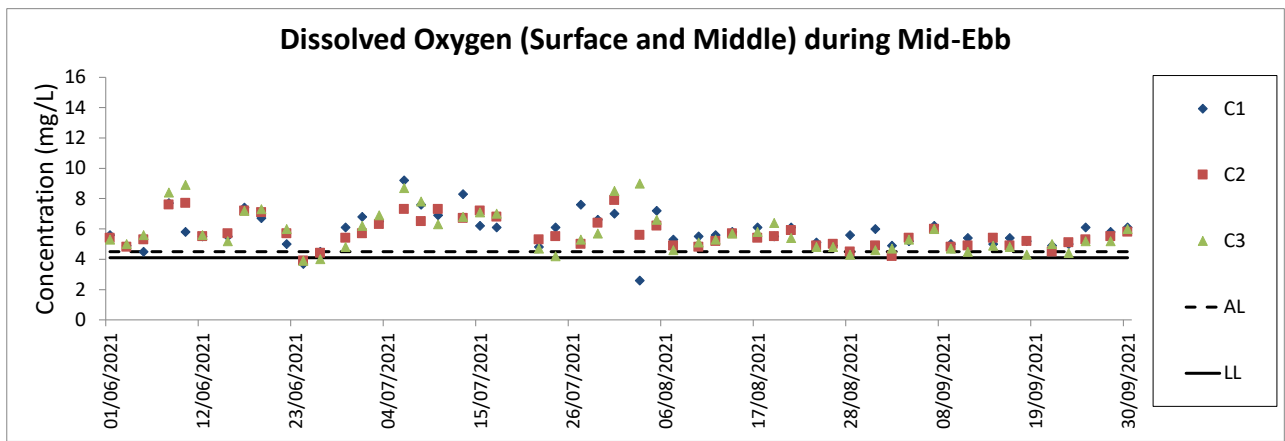
Noise Monitoring Results



Notes:

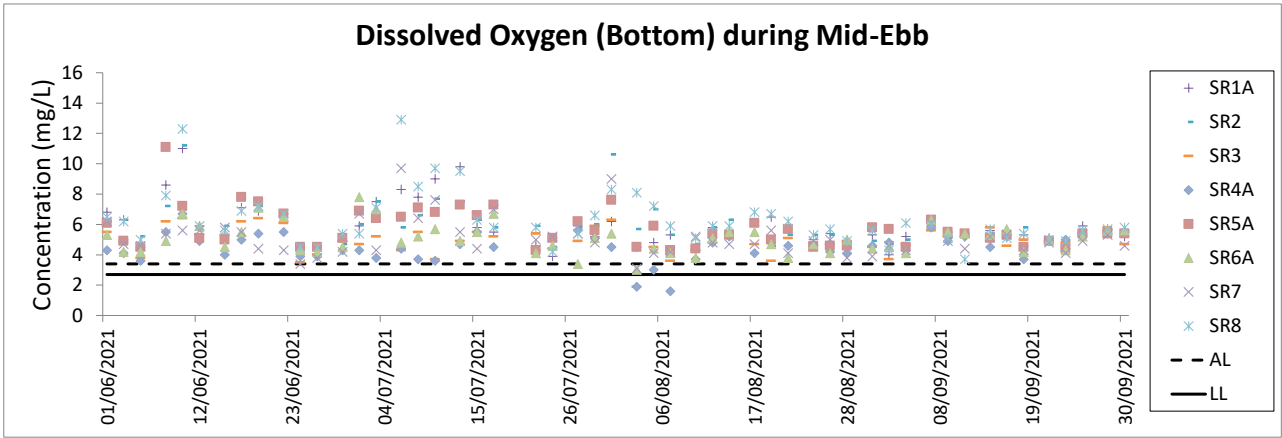
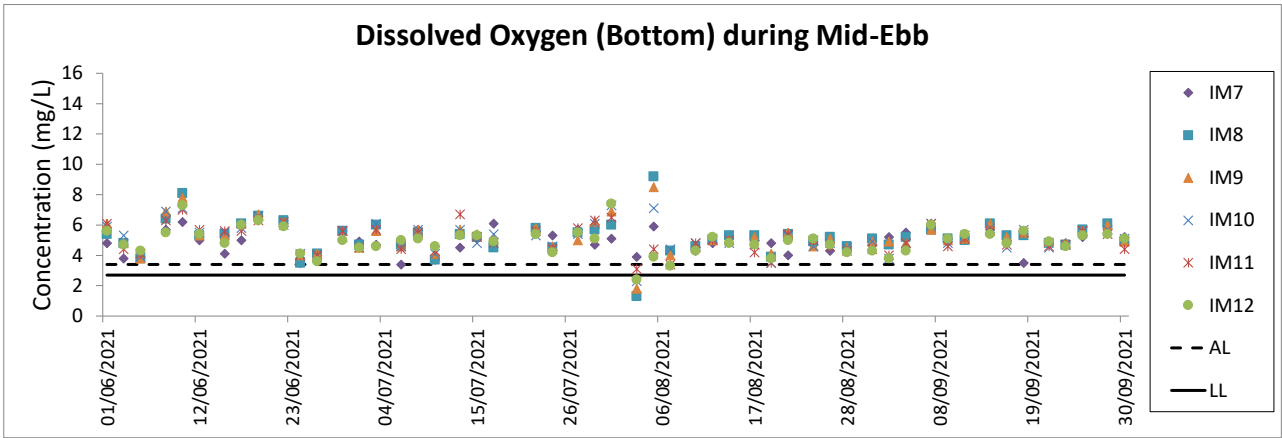
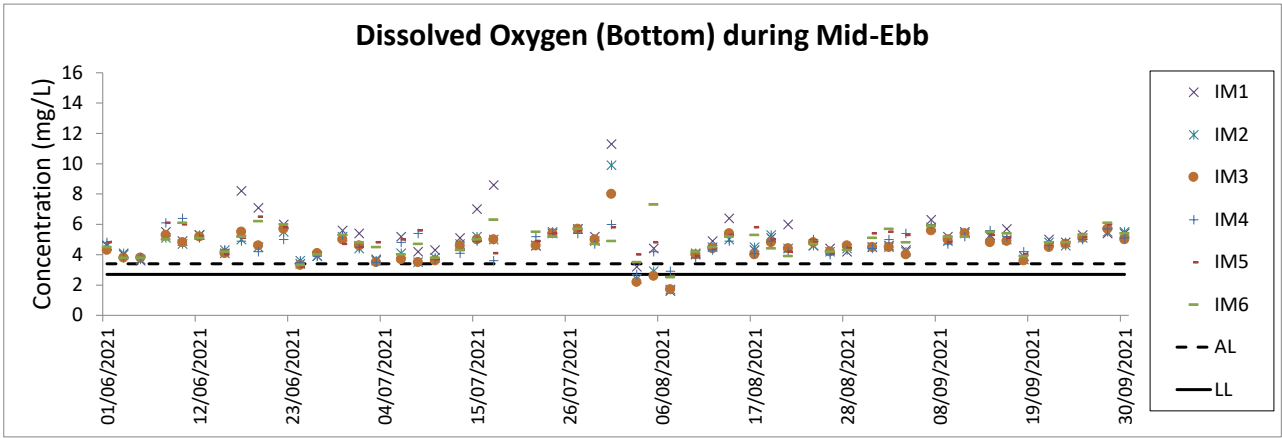
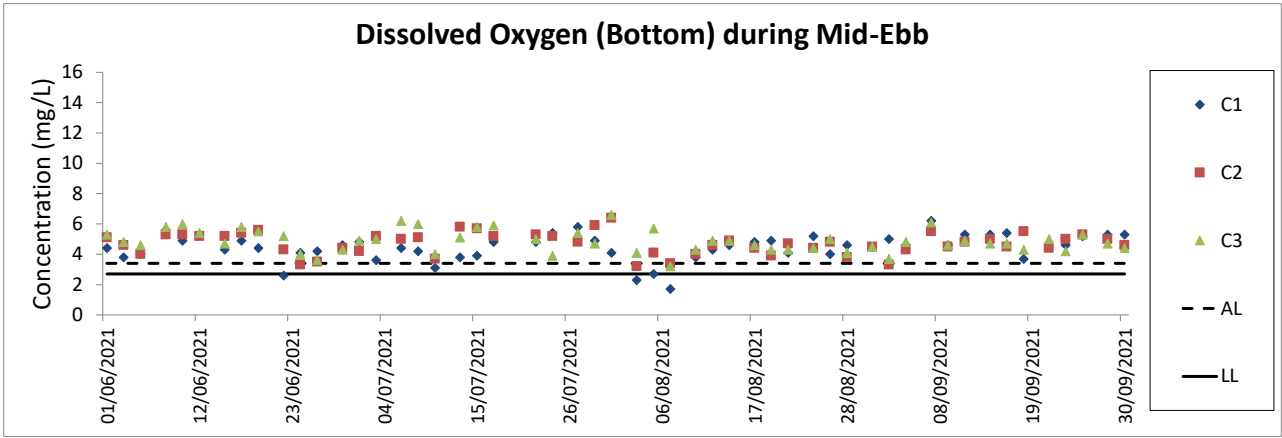
1. The Limit Level is reduced to 70dB(A) for school and 65dB(A) during school examination period at NM4. Pre-Secondary 1 Hong Kong Attainment Test took place on 13 July 2021 during this reporting period.
2. The key activities of the Project carried out in the reporting period included reclamation works and land-based works. Works in the reclamation areas included marine filling, seawall and facilities construction, together with runway and associated works such as bored piling for approach lights. Land-based works on existing airport island involved mainly airfield works, foundation and substructure work for Terminal 2 expansion, modification and tunnel work for Automated People Mover (APM) and Baggage Handling System (BHS), and preparation work for utilities, with activities include site establishment, site office construction, road and drainage works, cable ducting, demolition, piling, and excavation works.
3. General weather condition during monitoring ranged from sunny to cloudy. Detailed meteorological conditions can be referred to Table 2.6 of this Report and corresponding Monthly EM&A Reports.
4. QA/ QC requirements as stipulated in the EM&A Manual were carried out during measurement.

Water Quality Monitoring Results



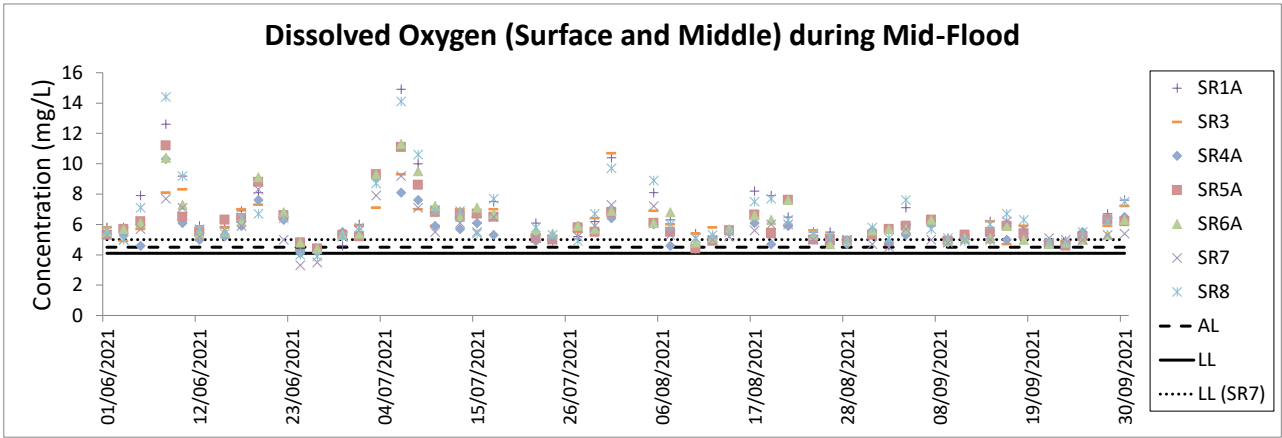
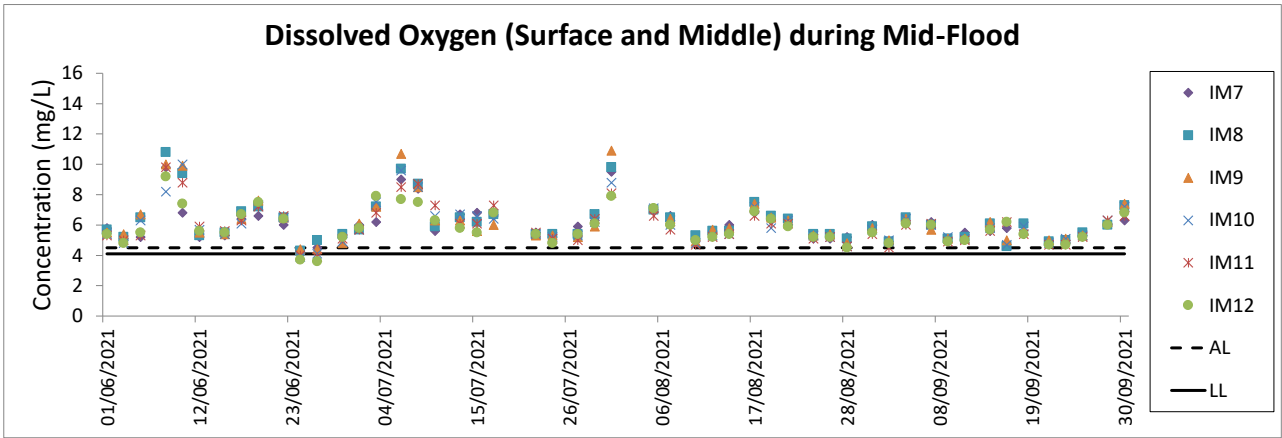
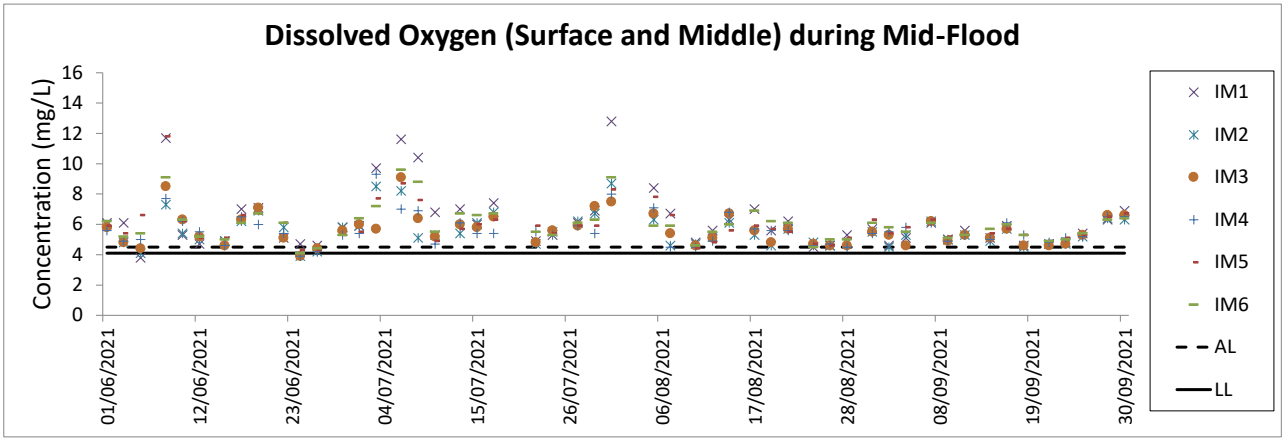
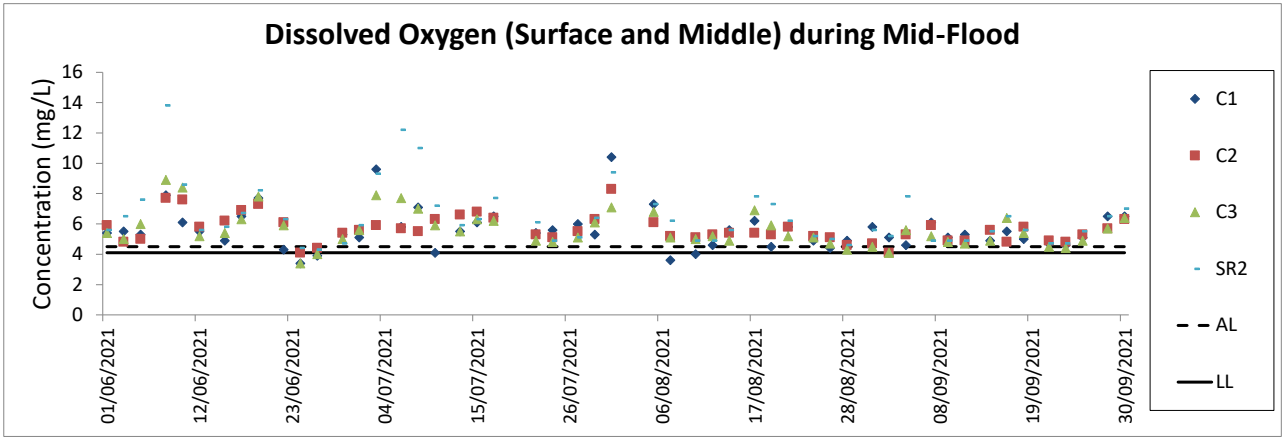
Notes:

1. The key marine works activities of the Project during monitoring included marine filling, seawall and facilities construction, together with runway and associated works such as bored piling for approach lights.
2. General weather condition during monitoring ranged from sunny to rainy, with sea condition ranged from calm to rough. Detailed meteorological conditions can be referred to Table 2.11 of this Report and corresponding Monthly EM&A Reports.
3. QA/ QC requirements as stipulated in the EM&A Manual were carried out during measurement.



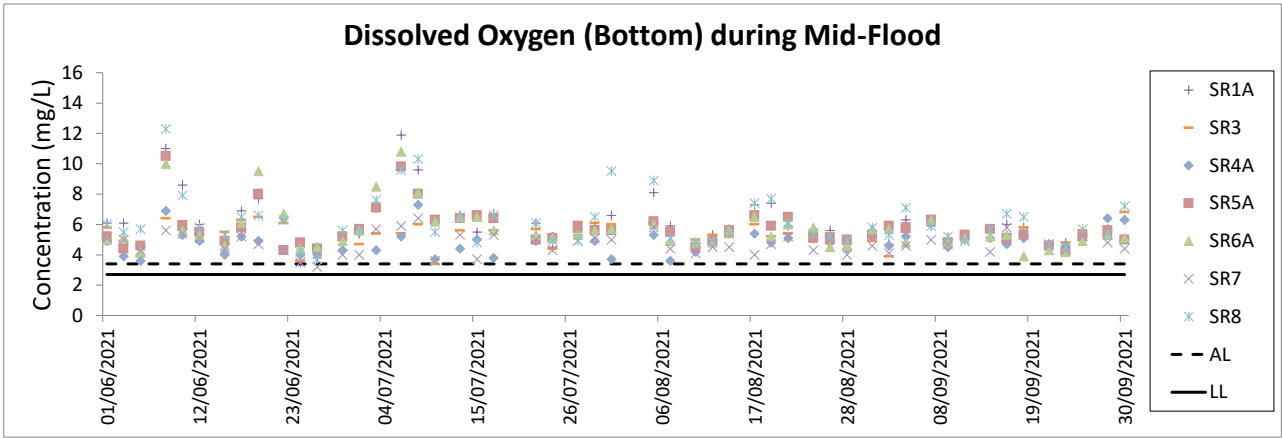
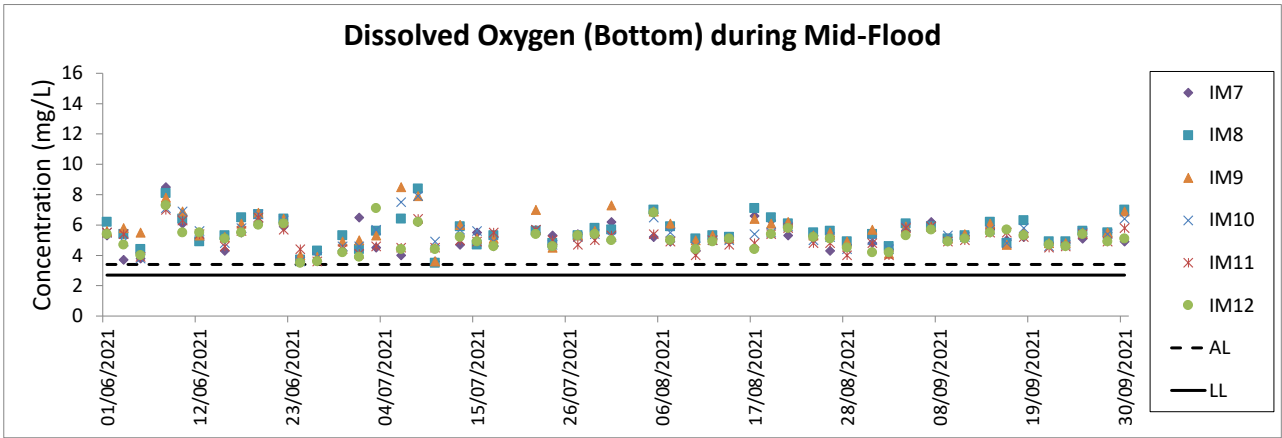
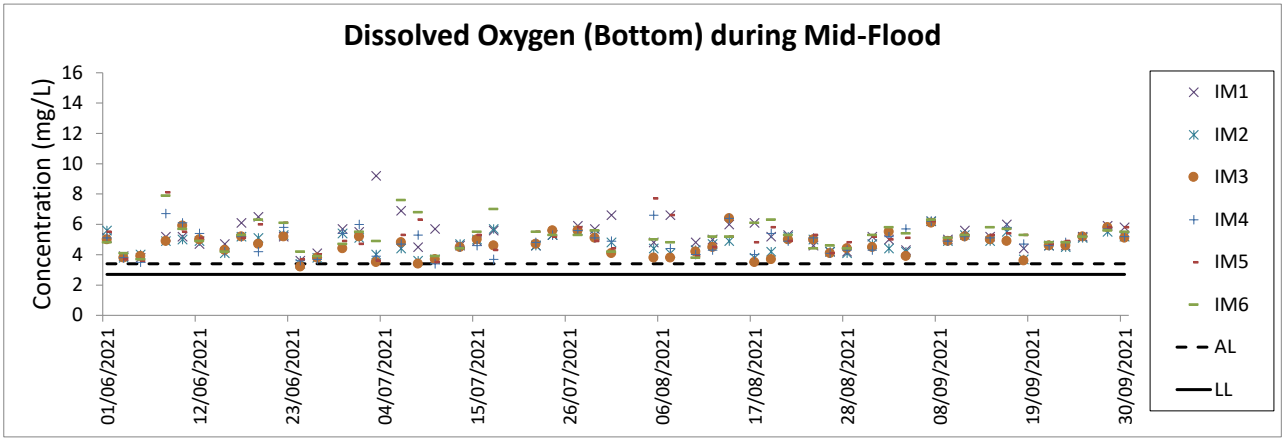
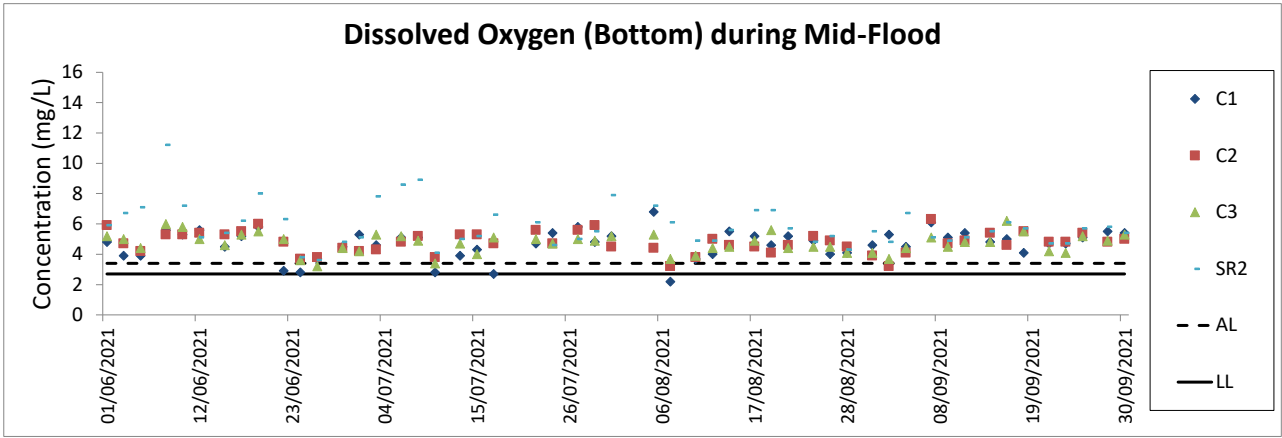
Notes:

1. The key marine works activities of the Project during monitoring included marine filling, seawall and facilities construction, together with runway and associated works such as bored piling for approach lights.
2. General weather condition during monitoring ranged from sunny to rainy, with sea condition ranged from calm to rough. Detailed meteorological conditions can be referred to Table 2.11 of this Report and corresponding Monthly EM&A Reports.
3. QA/ QC requirements as stipulated in the EM&A Manual were carried out during measurement.



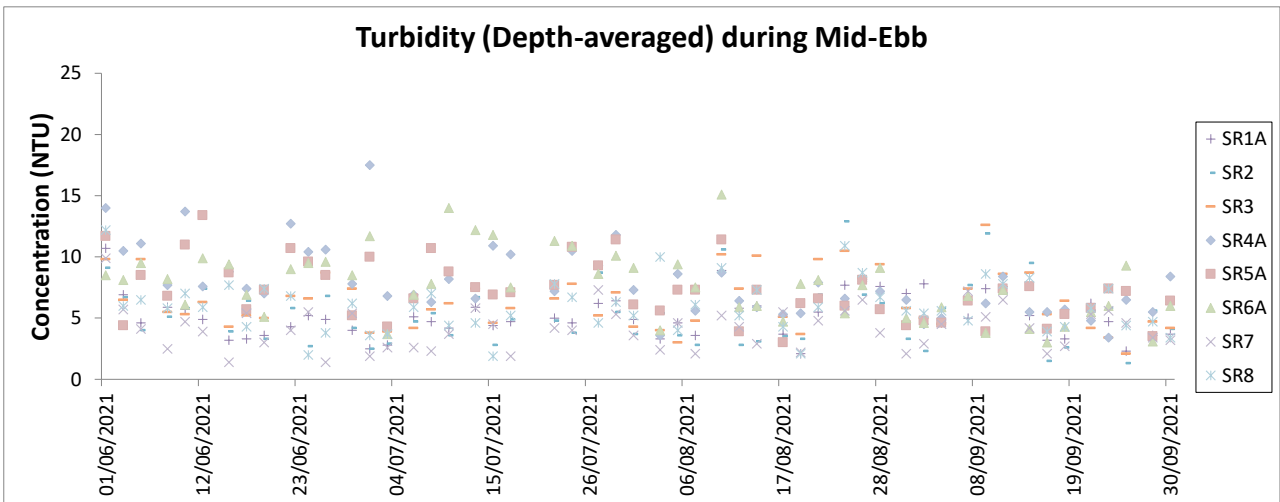
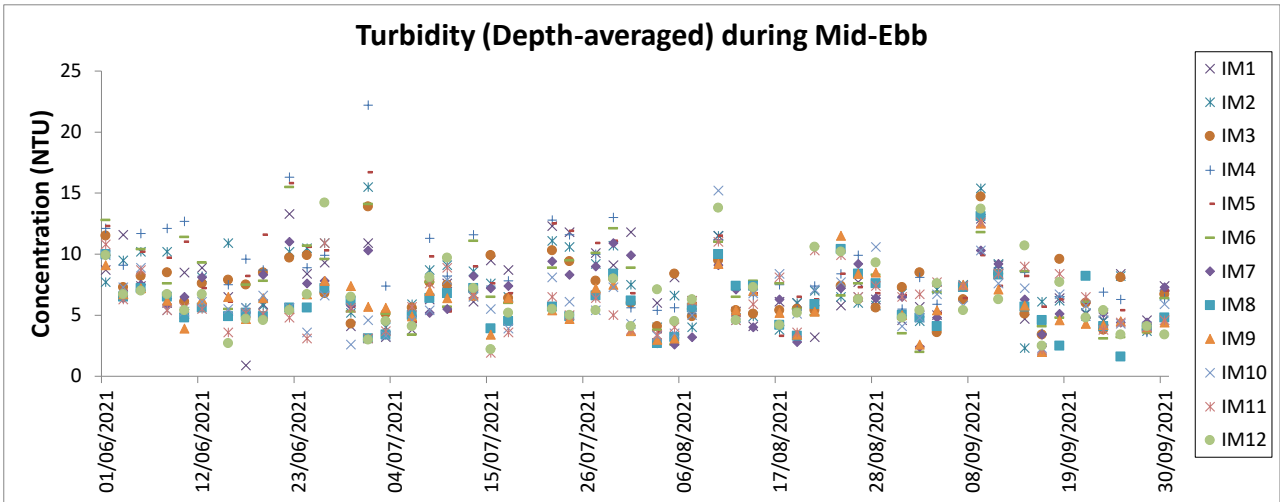
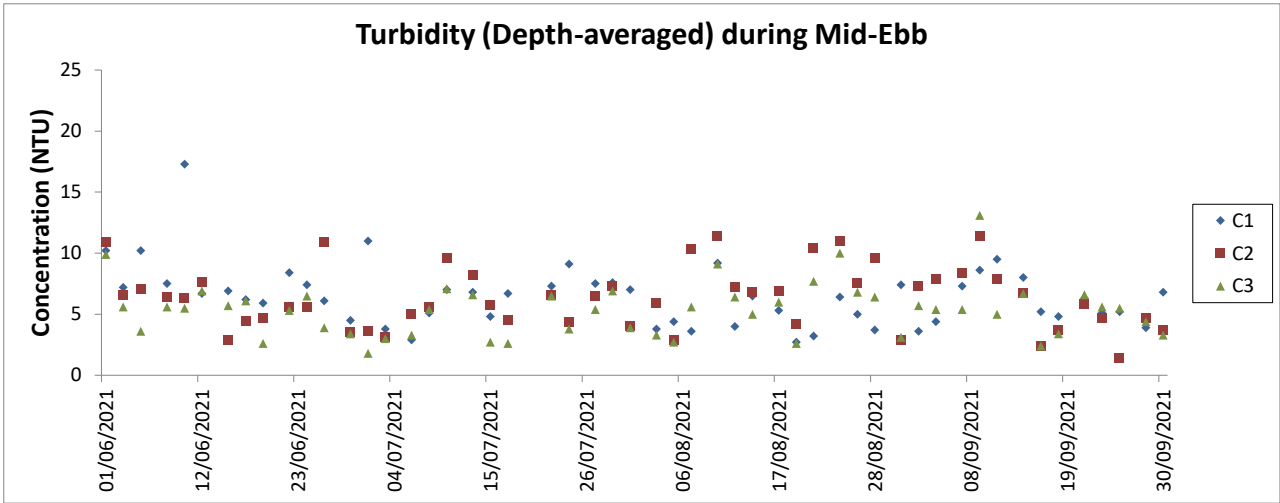
Notes:

1. The key marine works activities of the Project during monitoring included marine filling, seawall and facilities construction, together with runway and associated works such as bored piling for approach lights.
2. General weather condition during monitoring ranged from sunny to rainy, with sea condition ranged from calm to rough. Detailed meteorological conditions can be referred to Table 2.11 of this Report and corresponding Monthly EM&A Reports.
3. QA/ QC requirements as stipulated in the EM&A Manual were carried out during measurement.



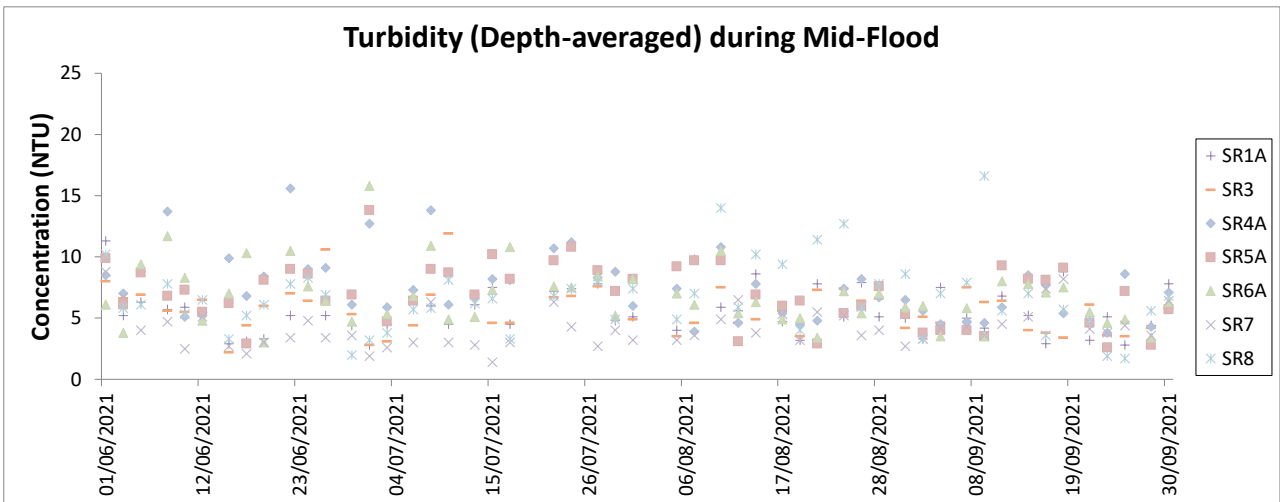
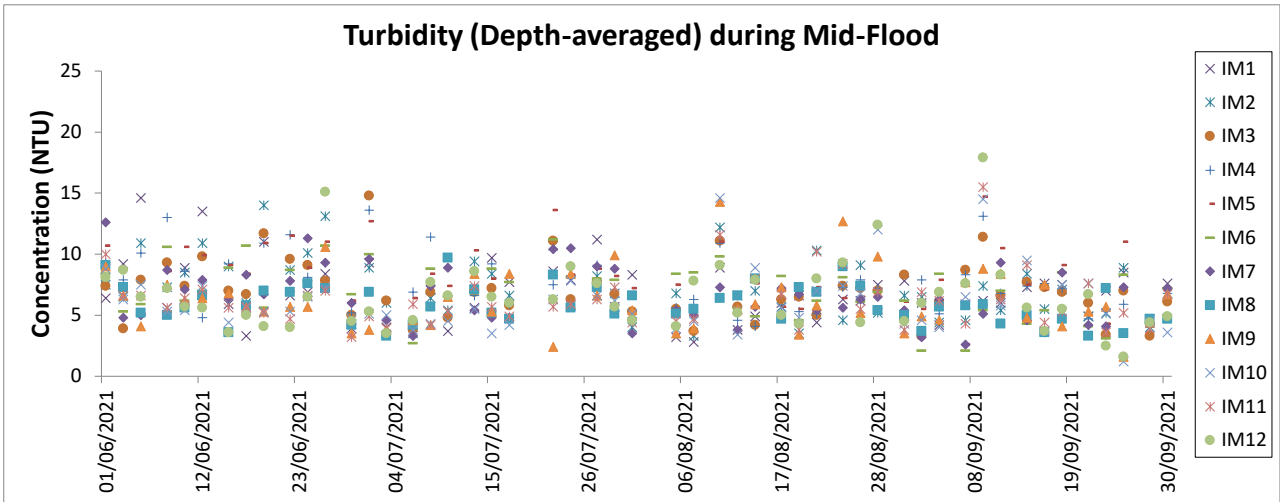
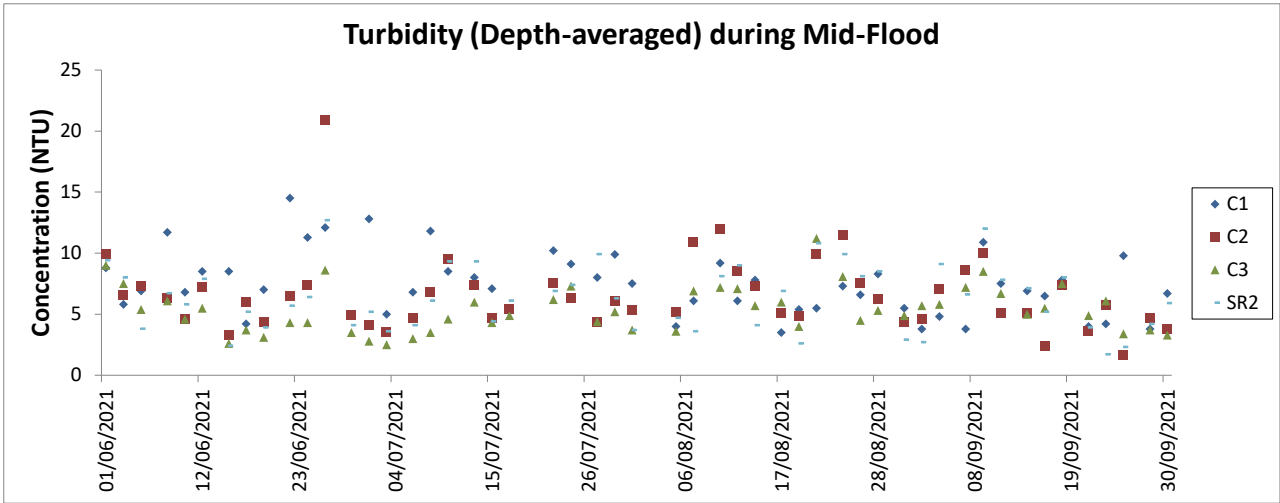
Notes:

1. The key marine works activities of the Project during monitoring included marine filling, seawall and facilities construction, together with runway and associated works such as bored piling for approach lights.
2. General weather condition during monitoring ranged from sunny to rainy, with sea condition ranged from calm to rough. Detailed meteorological conditions can be referred to Table 2.11 of this Report and corresponding Monthly EM&A Reports.
3. QA/ QC requirements as stipulated in the EM&A Manual were carried out during measurement.



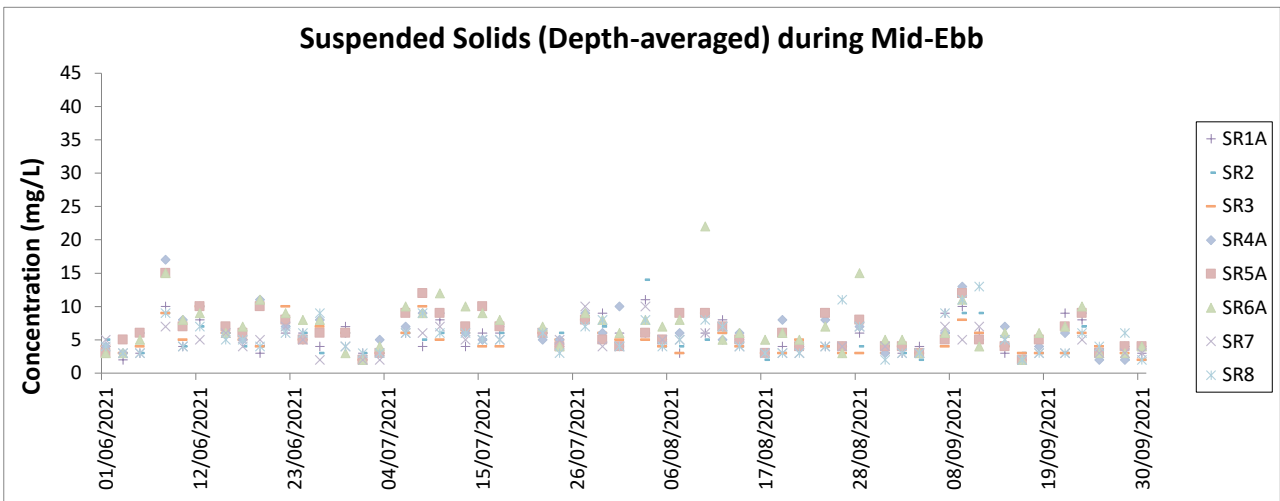
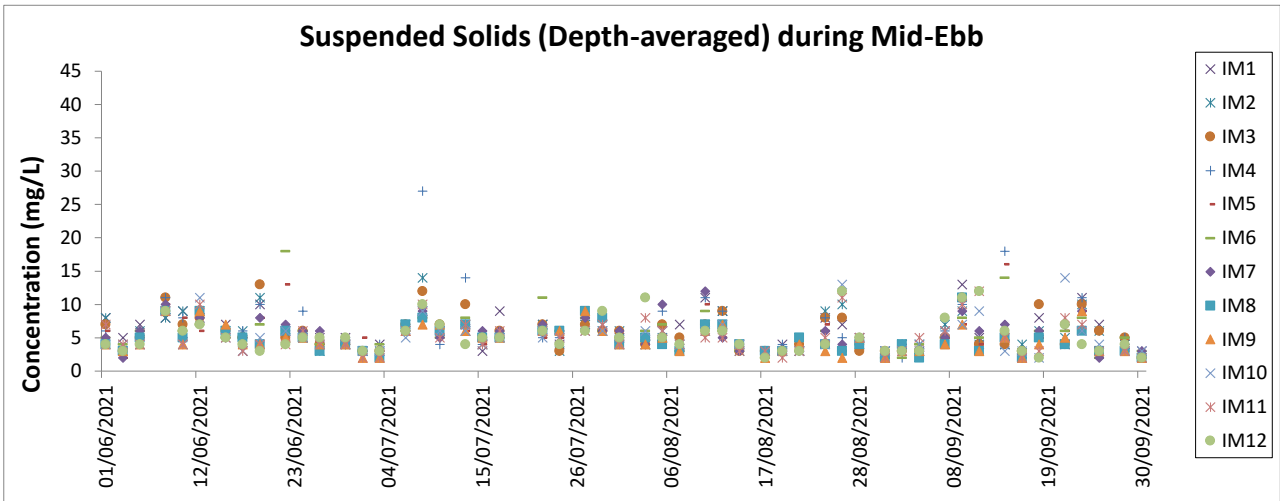
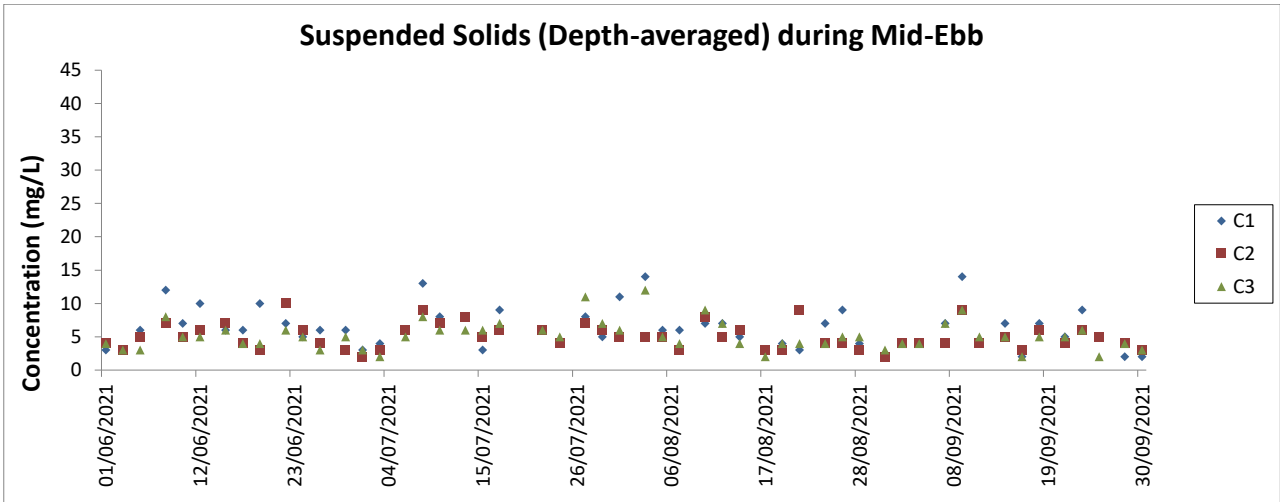
Notes:

1. The Action and Limit Levels can be referred to Table 2.8 of this Report.
2. The key marine works activities of the Project during monitoring included marine filling, seawall and facilities construction, together with runway and associated works such as bored piling for approach lights.
3. General weather condition during monitoring ranged from sunny to rainy, with sea condition ranged from calm to rough. Detailed meteorological conditions can be referred to Table 2.11 of this Report and corresponding Monthly EM&A Reports.
4. QA/ QC requirements as stipulated in the EM&A Manual were carried out during measurement.



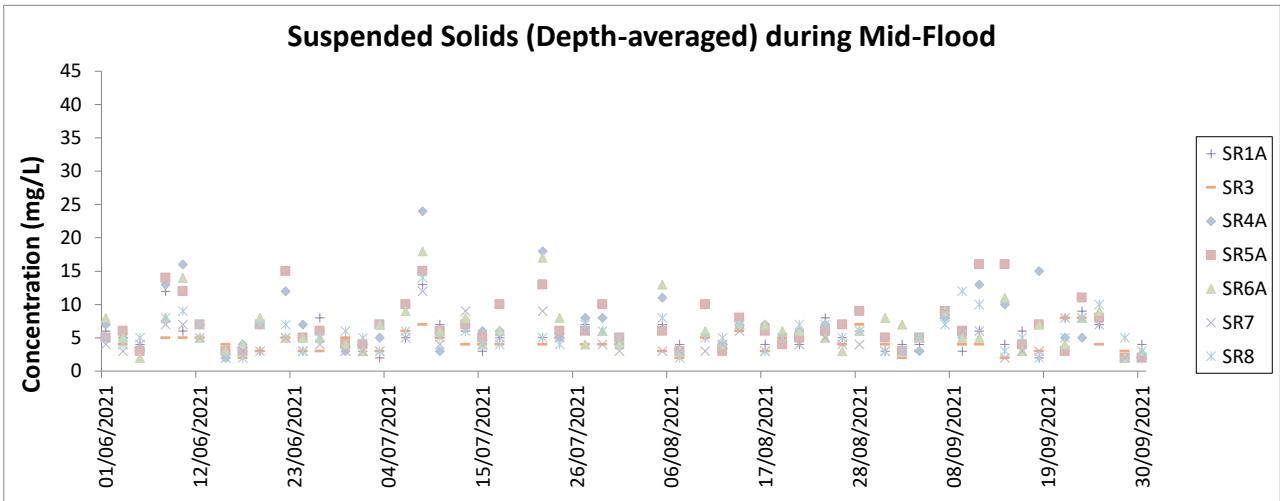
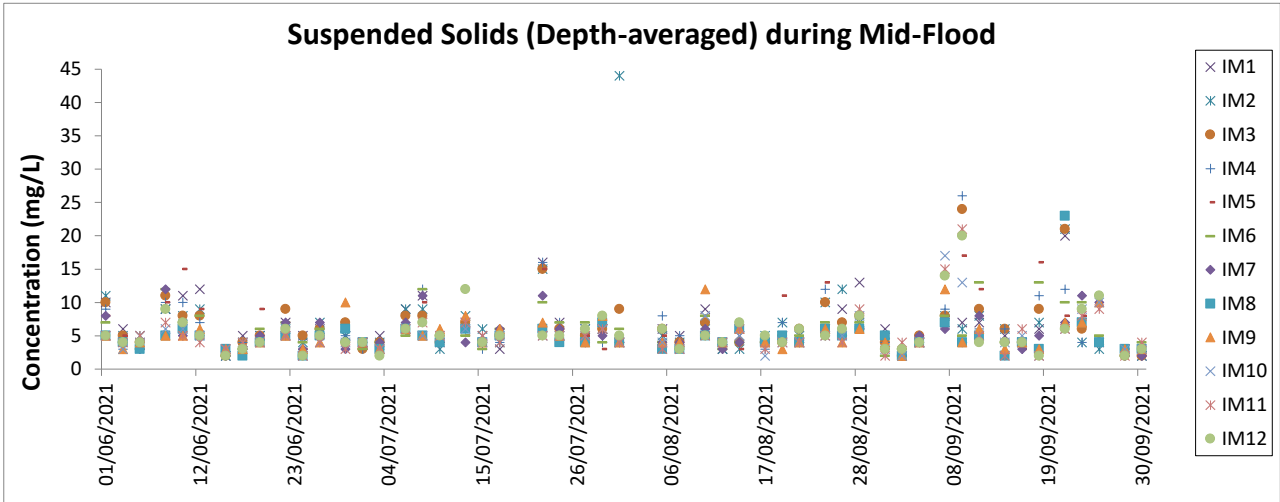
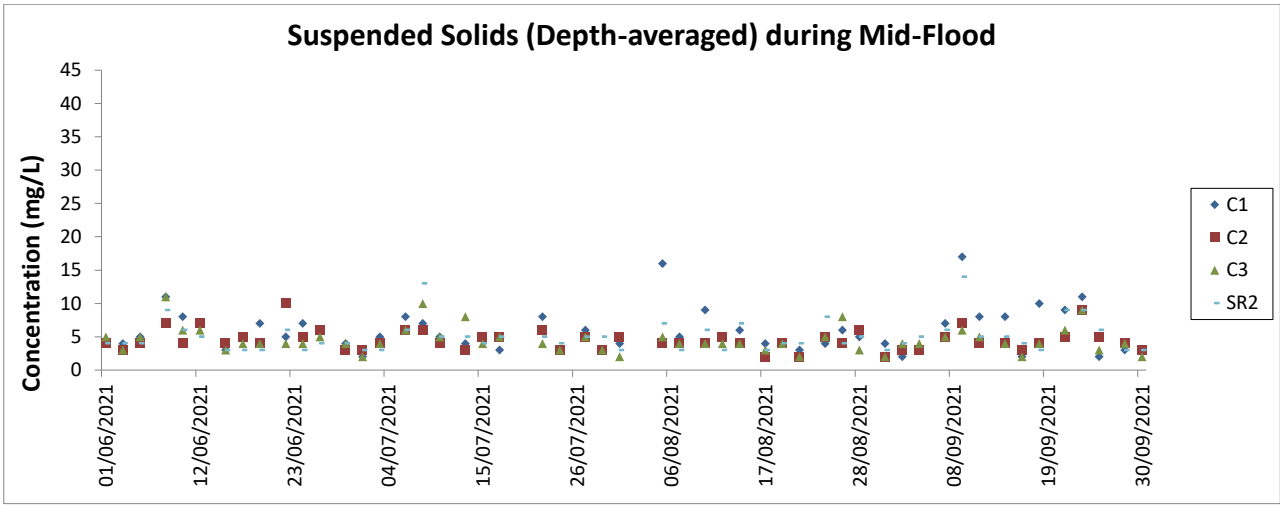
Notes:

1. The Action and Limit Levels can be referred to Table 2.8 of this Report.
2. The key marine works activities of the Project during monitoring included marine filling, seawall and facilities construction, together with runway and associated works such as bored piling for approach lights.
3. General weather condition during monitoring ranged from sunny to rainy, with sea condition ranged from calm to rough. Detailed meteorological conditions can be referred to Table 2.11 of this Report and corresponding Monthly EM&A Reports.
4. QA/ QC requirements as stipulated in the EM&A Manual were carried out during measurement.



Notes:

1. The Action and Limit Levels can be referred to Table 2.8 of this Report.
2. The key marine works activities of the Project during monitoring included marine filling, seawall and facilities construction, together with runway and associated works such as bored piling for approach lights.
3. General weather condition during monitoring ranged from sunny to rainy, with sea condition ranged from calm to rough. Detailed meteorological conditions can be referred to Table 2.11 of this Report and corresponding Monthly EM&A Reports.
4. QA/ QC requirements as stipulated in the EM&A Manual were carried out during measurement.



Notes:

1. The Action and Limit Levels can be referred to Table 2.8 of this Report.
2. The key marine works activities of the Project during monitoring included marine filling, seawall and facilities construction, together with runway and associated works such as bored piling for approach lights.
3. General weather condition during monitoring ranged from sunny to rainy, with sea condition ranged from calm to rough. Detailed meteorological conditions can be referred to Table 2.11 of this Report and corresponding Monthly EM&A Reports.
4. QA/QC requirements as stipulated in the EM&A Manual were carried out during measurement.

Chinese White Dolphin Monitoring Results

CWD Small Vessel Line-transect Survey

Survey Effort Data

DATE	AREA	BEAU	KM SEARCHED	SEASON	VESSEL	TYPE	P/S
12-Jul-21	SWL	2	25.750	SUMMER	32166	3RS ET	P
12-Jul-21	SWL	3	25.520	SUMMER	32166	3RS ET	P
12-Jul-21	SWL	2	8.900	SUMMER	32166	3RS ET	S
12-Jul-21	SWL	3	6.610	SUMMER	32166	3RS ET	S
13-Jul-21	SWL	1	1.050	SUMMER	32166	3RS ET	P
13-Jul-21	SWL	2	35.764	SUMMER	32166	3RS ET	P
13-Jul-21	SWL	3	14.402	SUMMER	32166	3RS ET	P
13-Jul-21	SWL	1	1.160	SUMMER	32166	3RS ET	S
13-Jul-21	SWL	2	9.900	SUMMER	32166	3RS ET	S
13-Jul-21	SWL	3	4.150	SUMMER	32166	3RS ET	S
14-Jul-21	AW	2	4.740	SUMMER	32166	3RS ET	P
14-Jul-21	WL	1	0.970	SUMMER	32166	3RS ET	P
14-Jul-21	WL	2	6.905	SUMMER	32166	3RS ET	P
14-Jul-21	WL	3	8.190	SUMMER	32166	3RS ET	P
14-Jul-21	WL	2	4.141	SUMMER	32166	3RS ET	S
14-Jul-21	WL	3	5.059	SUMMER	32166	3RS ET	S
19-Jul-21	NEL	3	31.750	SUMMER	32166	3RS ET	P
19-Jul-21	NEL	4	5.200	SUMMER	32166	3RS ET	P
19-Jul-21	NEL	3	8.950	SUMMER	32166	3RS ET	S
19-Jul-21	NEL	4	1.300	SUMMER	32166	3RS ET	S
21-Jul-21	NEL	2	5.200	SUMMER	32166	3RS ET	P
21-Jul-21	NEL	3	31.980	SUMMER	32166	3RS ET	P
21-Jul-21	NEL	2	4.000	SUMMER	32166	3RS ET	S
21-Jul-21	NEL	3	6.120	SUMMER	32166	3RS ET	S
22-Jul-21	AW	2	2.010	SUMMER	32166	3RS ET	P
22-Jul-21	AW	3	2.980	SUMMER	32166	3RS ET	P
22-Jul-21	WL	2	9.208	SUMMER	32166	3RS ET	P
22-Jul-21	WL	3	5.108	SUMMER	32166	3RS ET	P
22-Jul-21	WL	4	0.310	SUMMER	32166	3RS ET	P
22-Jul-21	WL	2	2.660	SUMMER	32166	3RS ET	S
22-Jul-21	WL	3	4.919	SUMMER	32166	3RS ET	S
22-Jul-21	WL	4	0.660	SUMMER	32166	3RS ET	S
26-Jul-21	NWL	2	62.210	SUMMER	32166	3RS ET	P
26-Jul-21	NWL	2	10.690	SUMMER	32166	3RS ET	S
28-Jul-21	NWL	2	34.380	SUMMER	32166	3RS ET	P
28-Jul-21	NWL	3	28.060	SUMMER	32166	3RS ET	P
28-Jul-21	NWL	4	0.600	SUMMER	32166	3RS ET	P
28-Jul-21	NWL	2	3.370	SUMMER	32166	3RS ET	S
28-Jul-21	NWL	3	7.420	SUMMER	32166	3RS ET	S
11-Aug-21	NWL	2	50.150	SUMMER	32166	3RS ET	P
11-Aug-21	NWL	3	10.620	SUMMER	32166	3RS ET	P
11-Aug-21	NWL	2	11.950	SUMMER	32166	3RS ET	S
16-Aug-21	SWL	2	38.120	SUMMER	32166	3RS ET	P
16-Aug-21	SWL	3	16.400	SUMMER	32166	3RS ET	P
16-Aug-21	SWL	2	12.480	SUMMER	32166	3RS ET	S

DATE	AREA	BEAU	KM SEARCHED	SEASON	VESSEL	TYPE	P/S
16-Aug-21	SWL	3	3.200	SUMMER	32166	3RS ET	S
18-Aug-21	AW	2	2.970	SUMMER	32166	3RS ET	P
18-Aug-21	AW	3	1.820	SUMMER	32166	3RS ET	P
18-Aug-21	WL	2	3.420	SUMMER	32166	3RS ET	P
18-Aug-21	WL	3	15.902	SUMMER	32166	3RS ET	P
18-Aug-21	WL	2	1.090	SUMMER	32166	3RS ET	S
18-Aug-21	WL	3	8.908	SUMMER	32166	3RS ET	S
19-Aug-21	NWL	2	35.700	SUMMER	32166	3RS ET	P
19-Aug-21	NWL	3	28.600	SUMMER	32166	3RS ET	P
19-Aug-21	NWL	2	9.900	SUMMER	32166	3RS ET	S
19-Aug-21	NWL	3	1.300	SUMMER	32166	3RS ET	S
20-Aug-21	SWL	1	1.087	SUMMER	32166	3RS ET	P
20-Aug-21	SWL	2	48.720	SUMMER	32166	3RS ET	P
20-Aug-21	SWL	3	3.500	SUMMER	32166	3RS ET	P
20-Aug-21	SWL	1	14.483	SUMMER	32166	3RS ET	S
20-Aug-21	SWL	2	2.300	SUMMER	32166	3RS ET	S
24-Aug-21	AW	2	4.770	SUMMER	32166	3RS ET	P
24-Aug-21	WL	2	6.700	SUMMER	32166	3RS ET	P
24-Aug-21	WL	3	13.750	SUMMER	32166	3RS ET	P
24-Aug-21	WL	2	3.190	SUMMER	32166	3RS ET	S
24-Aug-21	WL	3	7.610	SUMMER	32166	3RS ET	S
25-Aug-21	NEL	2	27.950	SUMMER	32166	3RS ET	P
25-Aug-21	NEL	3	9.200	SUMMER	32166	3RS ET	P
25-Aug-21	NEL	2	6.650	SUMMER	32166	3RS ET	S
25-Aug-21	NEL	3	3.400	SUMMER	32166	3RS ET	S
26-Aug-21	NEL	2	26.405	SUMMER	32166	3RS ET	P
26-Aug-21	NEL	3	10.375	SUMMER	32166	3RS ET	P
26-Aug-21	NEL	2	7.360	SUMMER	32166	3RS ET	S
26-Aug-21	NEL	3	3.160	SUMMER	32166	3RS ET	S
6-Sep-21	NEL	2	36.750	AUTUMN	32166	3RS ET	P
6-Sep-21	NEL	2	8.950	AUTUMN	32166	3RS ET	S
6-Sep-21	NEL	3	1.200	AUTUMN	32166	3RS ET	S
7-Sep-21	NWL	2	19.780	AUTUMN	32166	3RS ET	P
7-Sep-21	NWL	3	37.420	AUTUMN	32166	3RS ET	P
7-Sep-21	NWL	4	6.000	AUTUMN	32166	3RS ET	P
7-Sep-21	NWL	2	5.300	AUTUMN	32166	3RS ET	S
7-Sep-21	NWL	3	6.000	AUTUMN	32166	3RS ET	S
7-Sep-21	NWL	4	1.100	AUTUMN	32166	3RS ET	S
8-Sep-21	SWL	2	28.388	AUTUMN	32166	3RS ET	P
8-Sep-21	SWL	3	23.140	AUTUMN	32166	3RS ET	P
8-Sep-21	SWL	2	10.386	AUTUMN	32166	3RS ET	S
8-Sep-21	SWL	3	4.150	AUTUMN	32166	3RS ET	S
10-Sep-21	NEL	2	7.300	AUTUMN	32166	3RS ET	P
10-Sep-21	NEL	3	26.580	AUTUMN	32166	3RS ET	P
10-Sep-21	NEL	4	3.200	AUTUMN	32166	3RS ET	P
10-Sep-21	NEL	2	2.820	AUTUMN	32166	3RS ET	S
10-Sep-21	NEL	3	7.300	AUTUMN	32166	3RS ET	S

DATE	AREA	BEAU	KM SEARCHED	SEASON	VESSEL	TYPE	P/S
14-Sep-21	SWL	2	29.785	AUTUMN	32166	3RS ET	P
14-Sep-21	SWL	3	20.800	AUTUMN	32166	3RS ET	P
14-Sep-21	SWL	4	2.450	AUTUMN	32166	3RS ET	P
14-Sep-21	SWL	2	9.852	AUTUMN	32166	3RS ET	S
14-Sep-21	SWL	3	7.200	AUTUMN	32166	3RS ET	S
16-Sep-21	AW	2	4.860	AUTUMN	32166	3RS ET	P
16-Sep-21	WL	2	9.094	AUTUMN	32166	3RS ET	P
16-Sep-21	WL	3	5.730	AUTUMN	32166	3RS ET	P
16-Sep-21	WL	2	3.753	AUTUMN	32166	3RS ET	S
16-Sep-21	WL	3	4.210	AUTUMN	32166	3RS ET	S
20-Sep-21	NWL	2	57.280	AUTUMN	32166	3RS ET	P
20-Sep-21	NWL	3	6.990	AUTUMN	32166	3RS ET	P
20-Sep-21	NWL	2	9.500	AUTUMN	32166	3RS ET	S
20-Sep-21	NWL	3	1.630	AUTUMN	32166	3RS ET	S
23-Sep-21	AW	2	1.200	AUTUMN	32166	3RS ET	P
23-Sep-21	AW	3	3.820	AUTUMN	32166	3RS ET	P
23-Sep-21	WL	2	6.040	AUTUMN	32166	3RS ET	P
23-Sep-21	WL	3	7.319	AUTUMN	32166	3RS ET	P
23-Sep-21	WL	4	4.400	AUTUMN	32166	3RS ET	P
23-Sep-21	WL	2	5.350	AUTUMN	32166	3RS ET	S
23-Sep-21	WL	3	3.161	AUTUMN	32166	3RS ET	S
23-Sep-21	WL	4	2.090	AUTUMN	32166	3RS ET	S

CWD Small Vessel Line-transect Survey

Sighting Data

DATE	STG #	TIME	CWD/FP	GP SZ	AREA	BEAU	PSD	EFFORT	TYPE	DEC LAT	DEC LON	SEASON	BOAT ASSOC.	P/S
12-Jul-21	1	1225	CWD	1	SWL	3	70	ON	3RS ET	22.1605	113.8981	SUMMER	NONE	S
12-Jul-21	2	1314	CWD	1	SWL	3	1	ON	3RS ET	22.1962	113.8975	SUMMER	NONE	P
12-Jul-21	3	1426	CWD	2	SWL	2	531	ON	3RS ET	22.1933	113.8785	SUMMER	NONE	P
12-Jul-21	4	1507	CWD	5	SWL	3	41	ON	3RS ET	22.1860	113.8690	SUMMER	NONE	P
12-Jul-21	5	1540	CWD	3	SWL	2	63	ON	3RS ET	22.1944	113.8590	SUMMER	NONE	P
12-Jul-21	6	1610	CWD	4	SWL	3	573	ON	3RS ET	22.1894	113.8497	SUMMER	NONE	P
13-Jul-21	1	1357	CWD	3	SWL	2	379	ON	3RS ET	22.2073	113.8789	SUMMER	PURSE SEINER	S
13-Jul-21	2	1413	CWD	2	SWL	2	15	ON	3RS ET	22.2061	113.8780	SUMMER	NONE	P
13-Jul-21	3	1538	CWD	7	SWL	3	14	ON	3RS ET	22.1906	113.8495	SUMMER	PURSE SEINER	P
14-Jul-21	1	1036	CWD	1	WL	2	127	ON	3RS ET	22.2621	113.8558	SUMMER	NONE	S
14-Jul-21	2	1044	CWD	2	WL	1	343	ON	3RS ET	22.2616	113.8506	SUMMER	NONE	P
14-Jul-21	3	1055	CWD	5	WL	2	44	ON	3RS ET	22.2608	113.8475	SUMMER	NONE	P
14-Jul-21	4	1109	CWD	3	WL	2	779	ON	3RS ET	22.2546	113.8355	SUMMER	NONE	S
14-Jul-21	5	1147	CWD	4	WL	3	325	ON	3RS ET	22.2399	113.8277	SUMMER	NONE	S
14-Jul-21	6	1214	CWD	2	WL	3	17	ON	3RS ET	22.2300	113.8381	SUMMER	NONE	S
14-Jul-21	7	1240	CWD	3	WL	3	466	ON	3RS ET	22.2143	113.8223	SUMMER	NONE	P
22-Jul-21	1	1037	CWD	8	WL	2	453	ON	3RS ET	22.2644	113.8574	SUMMER	PURSE SEINER	S
22-Jul-21	2	1117	CWD	7	WL	3	411	ON	3RS ET	22.2499	113.8377	SUMMER	NONE	P
22-Jul-21	3	1147	CWD	2	WL	2	358	ON	3RS ET	22.2419	113.8391	SUMMER	NONE	P
22-Jul-21	4	1202	CWD	3	WL	3	32	ON	3RS ET	22.2326	113.8240	SUMMER	NONE	S
22-Jul-21	5	1211	CWD	2	WL	3	221	ON	3RS ET	22.2316	113.8299	SUMMER	NONE	P
22-Jul-21	6	1234	CWD	6	WL	3	22	ON	3RS ET	22.2141	113.8254	SUMMER	NONE	P
22-Jul-21	7	1314	CWD	3	WL	4	20	ON	3RS ET	22.2010	113.8252	SUMMER	NONE	S
22-Jul-21	8	1323	CWD	1	WL	3	170	ON	3RS ET	22.1963	113.8363	SUMMER	NONE	P
22-Jul-21	9	1336	CWD	4	WL	2	115	ON	3RS ET	22.1930	113.8426	SUMMER	PURSE SEINER	S
26-Jul-21	1	1204	CWD	1	NWL	2	567	ON	3RS ET	22.3826	113.8878	SUMMER	NONE	P
26-Jul-21	2	1309	CWD	4	NWL	2	490	ON	3RS ET	22.3885	113.8978	SUMMER	NONE	P
28-Jul-21	1	1035	CWD	1	NWL	2	32	ON	3RS ET	22.2820	113.8694	SUMMER	NONE	P
28-Jul-21	2	1105	CWD	2	NWL	2	302	ON	3RS ET	22.2920	113.8774	SUMMER	NONE	P
28-Jul-21	3	1305	CWD	1	NWL	2	63	ON	3RS ET	22.3522	113.8980	SUMMER	NONE	P
11-Aug-21	1	0948	CWD	3	NWL	3	29	ON	3RS ET	22.3932	113.8701	SUMMER	NONE	P

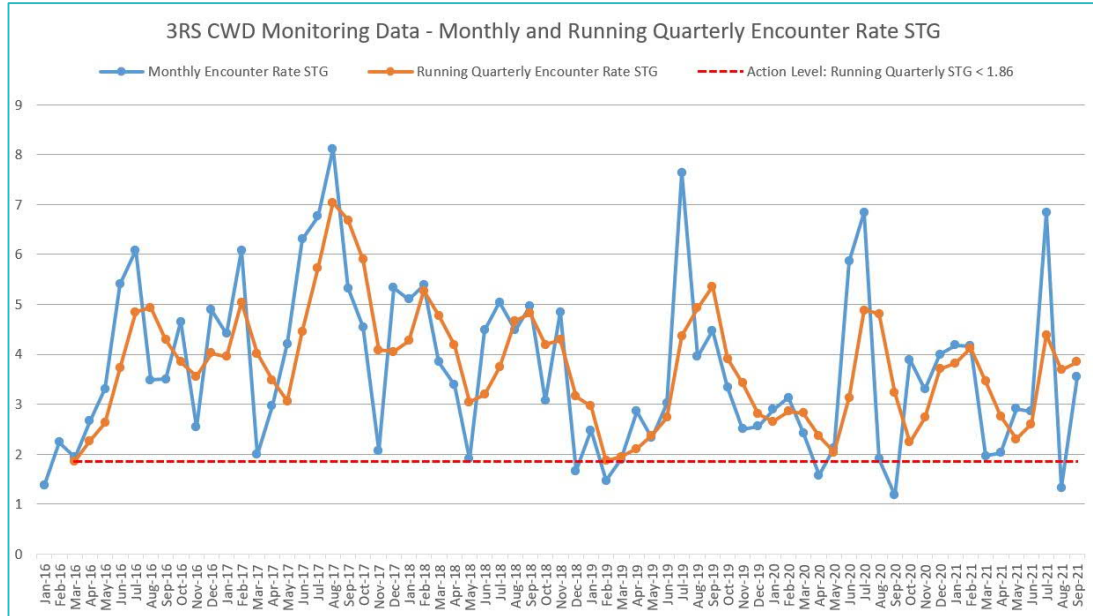
DATE	STG #	TIME	CWD/FP	GP SZ	AREA	BEAU	PSD	EFFORT	TYPE	DEC LAT	DEC LON	SEASON	BOAT ASSOC.	P/S
11-Aug-21	2	1226	CWD	4	NWL	2	415	ON	3RS ET	22.3805	113.8875	SUMMER	NONE	P
11-Aug-21	3	1328	CWD	1	NWL	2	27	ON	3RS ET	22.3812	113.8975	SUMMER	NONE	P
16-Aug-21	1	1109	FP	1	SWL	2	145	ON	3RS ET	22.1610	113.9274	SUMMER	NONE	P
18-Aug-21	1	1110	CWD	1	WL	3	75	ON	3RS ET	22.2416	113.8409	SUMMER	NONE	P
18-Aug-21	2	1221	CWD	6	WL	3	177	ON	3RS ET	22.1961	113.8406	SUMMER	PURSE SEINER	P
20-Aug-21	1	1048	FP	1	SWL	1	22	ON	3RS ET	22.1540	113.9361	SUMMER	NONE	P
20-Aug-21	2	1102	FP	1	SWL	2	352	ON	3RS ET	22.1587	113.9276	SUMMER	NONE	P
24-Aug-21	1	1148	CWD	4	WL	2	598	ON	3RS ET	22.2058	113.8327	SUMMER	NONE	P
8-Sep-21	1	1312	FP	4	SWL	2	119	ON	3RS ET	22.1520	113.8973	AUTUMN	NONE	P
8-Sep-21	2	1350	CWD	1	SWL	2	141	ON	3RS ET	22.2059	113.8879	AUTUMN	NONE	P
8-Sep-21	3	1436	CWD	1	SWL	3	133	ON	3RS ET	22.1733	113.8687	AUTUMN	NONE	P
8-Sep-21	4	1502	CWD	3	SWL	2	95	ON	3RS ET	22.1946	113.8587	AUTUMN	NONE	P
8-Sep-21	5	1537	CWD	6	SWL	3	729	ON	3RS ET	22.1754	113.8499	AUTUMN	NONE	P
14-Sep-21	1	1037	FP	3	SWL	2	157	ON	3RS ET	22.1819	113.9359	AUTUMN	NONE	P
14-Sep-21	2	1048	FP	1	SWL	2	170	ON	3RS ET	22.1602	113.9368	AUTUMN	NONE	P
14-Sep-21	3	1050	FP	4	SWL	2	35	ON	3RS ET	22.1577	113.9368	AUTUMN	NONE	P
14-Sep-21	4	1108	FP	2	SWL	2	179	ON	3RS ET	22.1582	113.9277	AUTUMN	NONE	P
14-Sep-21	5	1114	FP	5	SWL	2	234	ON	3RS ET	22.1666	113.9280	AUTUMN	NONE	P
14-Sep-21	6	1123	FP	2	SWL	2	63	ON	3RS ET	22.1830	113.9276	AUTUMN	NONE	P
16-Sep-21	1	1044	CWD	1	WL	3	154	ON	3RS ET	22.2606	113.8501	AUTUMN	NONE	P
16-Sep-21	2	1123	CWD	3	WL	3	170	ON	3RS ET	22.2410	113.8409	AUTUMN	NONE	P
16-Sep-21	3	1151	CWD	9	WL	2	67	ON	3RS ET	22.2255	113.8318	AUTUMN	NONE	P
16-Sep-21	4	1221	CWD	2	WL	2	215	ON	3RS ET	22.2051	113.8324	AUTUMN	NONE	P
16-Sep-21	5	1236	CWD	3	WL	2	141	ON	3RS ET	22.2012	113.8245	AUTUMN	NONE	S
16-Sep-21	6	1250	CWD	10	WL	2	208	ON	3RS ET	22.1961	113.8416	AUTUMN	NONE	P
16-Sep-21	7	1308	CWD	1	WL	2	31	ON	3RS ET	22.1926	113.8425	AUTUMN	NONE	S
20-Sep-21	1	1201	CWD	3	NWL	2	7	ON	3RS ET	22.3859	113.8781	AUTUMN	NONE	P
23-Sep-21	1	1046	CWD	1	WL	2	71	ON	3RS ET	22.2608	113.8454	AUTUMN	NONE	P
23-Sep-21	2	1110	CWD	2	WL	2	1497	ON	3RS ET	22.2444	113.8491	AUTUMN	NONE	S
23-Sep-21	3	1203	CWD	6	WL	3	22	ON	3RS ET	22.2139	113.8312	AUTUMN	NONE	P

Abbreviations: STG# = Sighting Number; GP SZ = Group Size; BEAU = Beaufort Sea State; PSD = Perpendicular Distance (in metres); N/A = Not Applicable; DEC LAT = Latitude (WGS84 in Decimal), DEC LON = Longitude (WGS84 in Decimal); BOAT ASSOC. = Fishing Boat Association

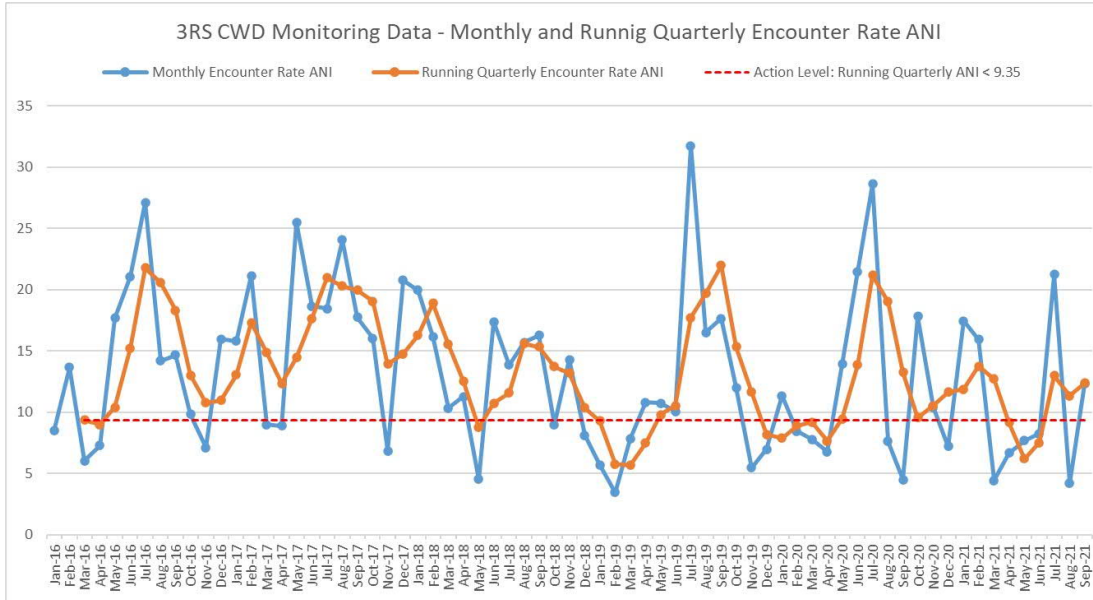
Sighting data of finless porpoise (FP) are presented for reference only. No relevant figure or text will be mentioned in the quarterly EM&A report. All FP sightings are excluded in calculation.

Graphical Presentation of Monthly and Running Quarterly Encounter Rates for the entire monitoring period

Encounter Rate STG:











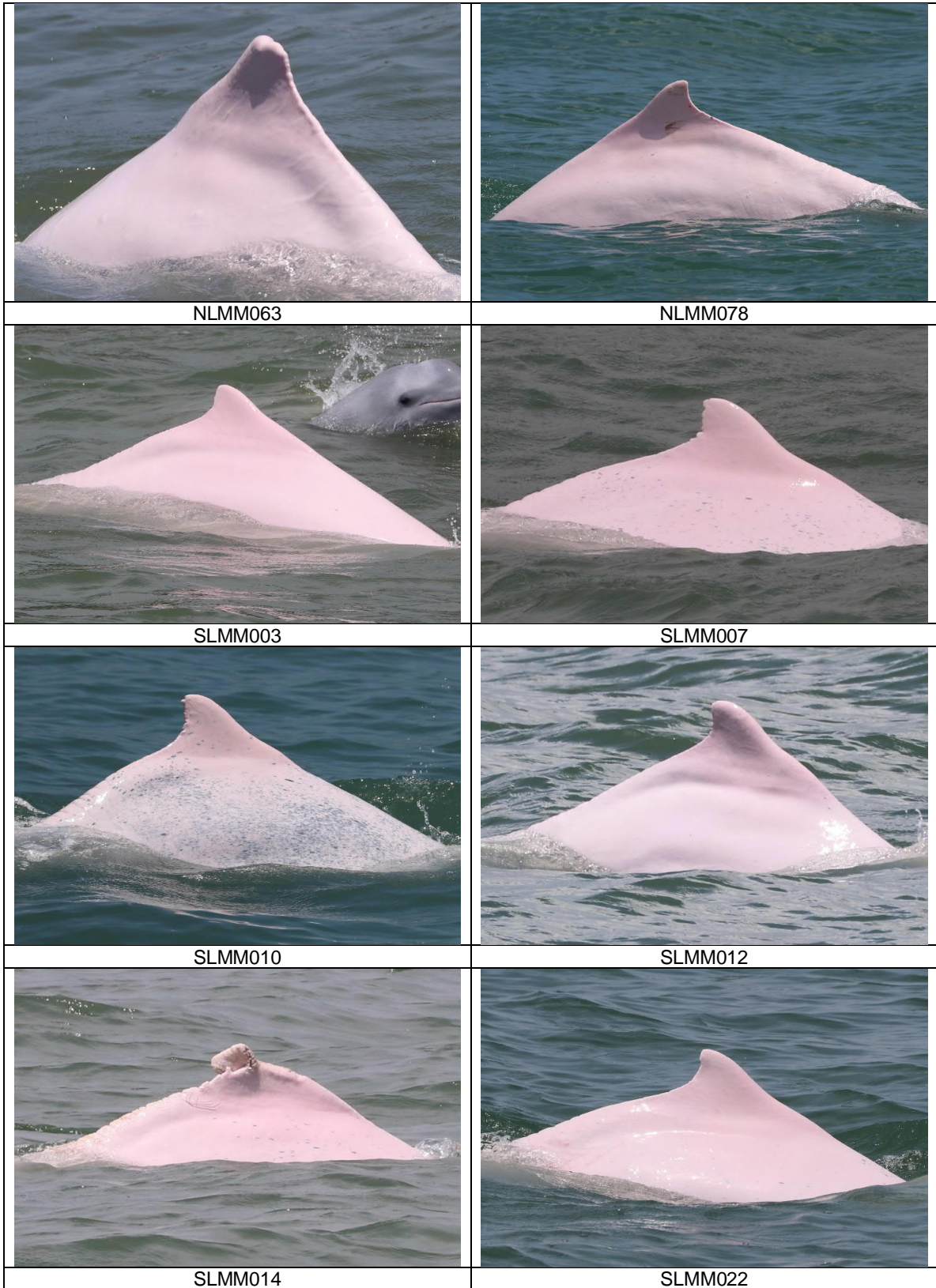
Encounter Rate ANI:

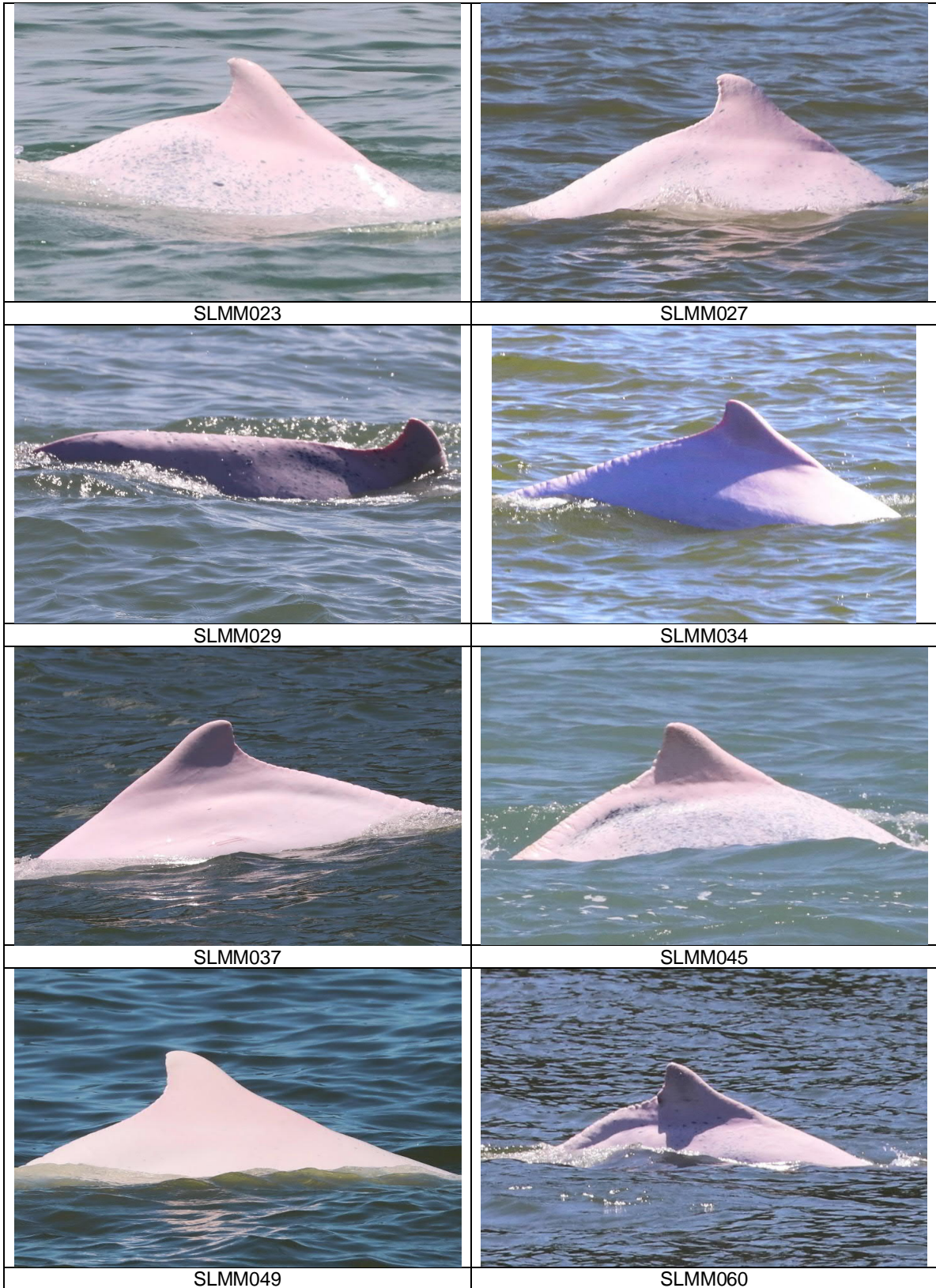


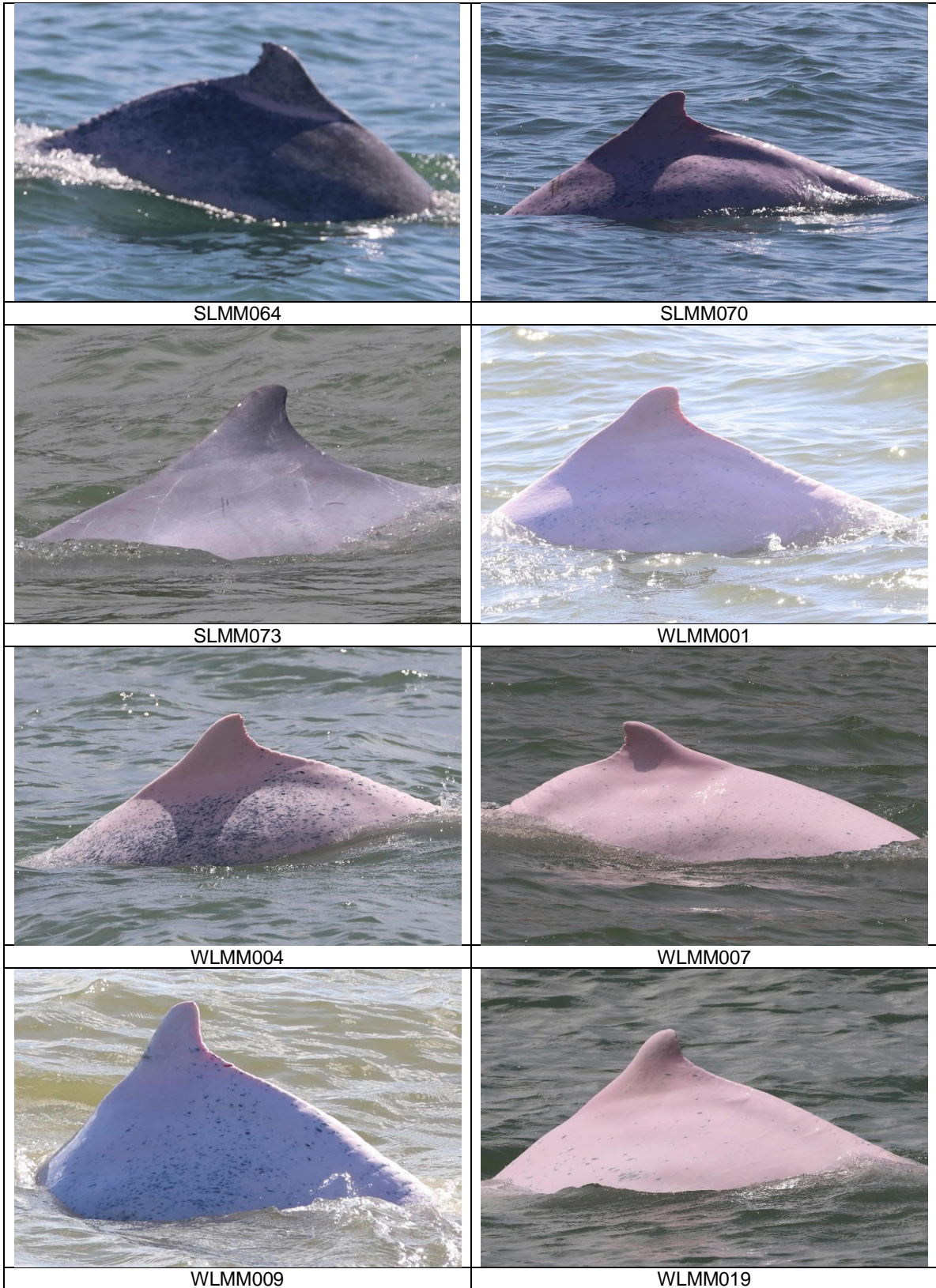
CWD Small Vessel Line-transect Survey

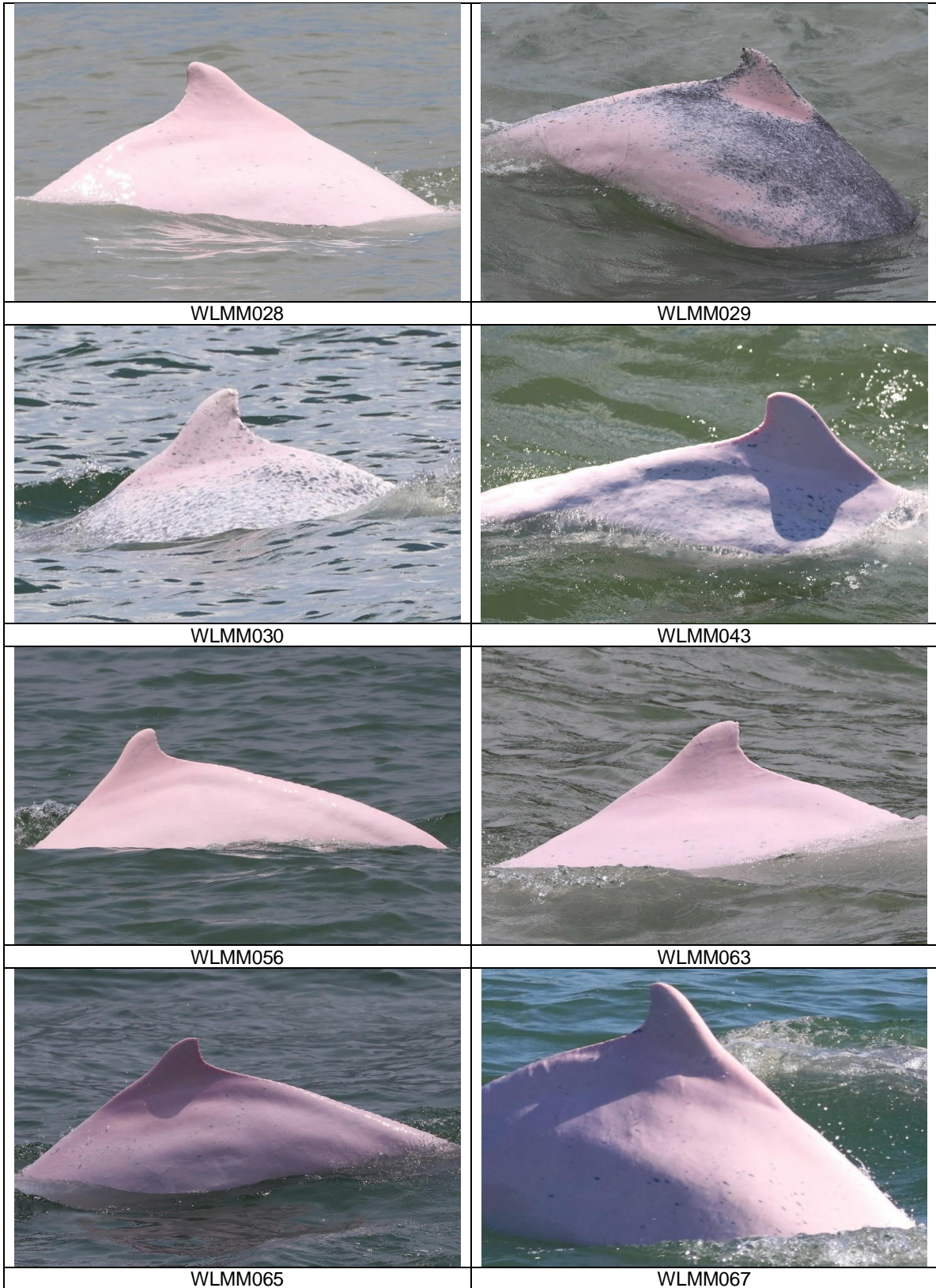
Photo Identification

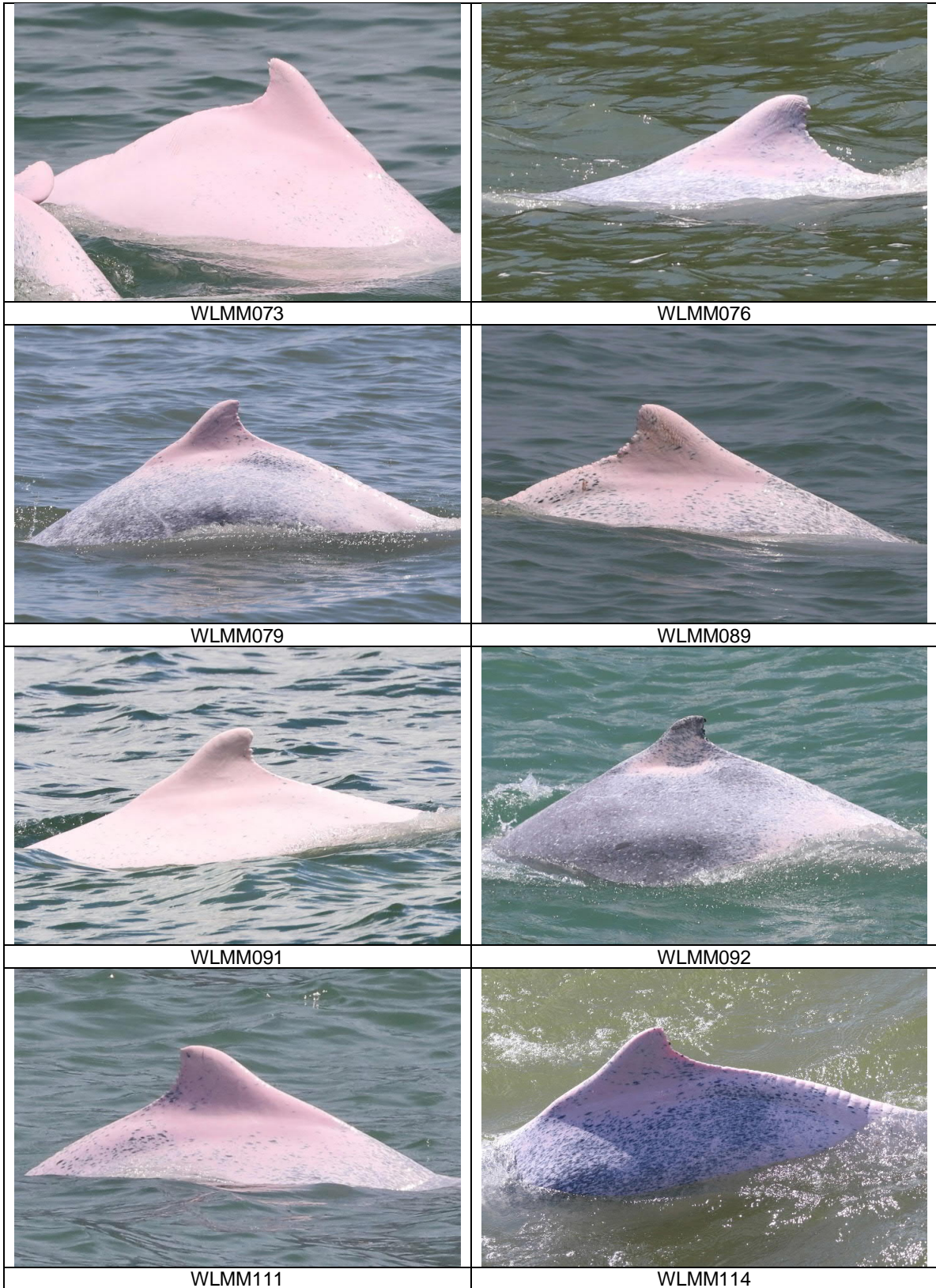
	
NLMM001	NLMM009
	
NLMM013	NLMM015
	
NLMM020	NLMM023
	
NLMM027	NLMM061













WLMM122



WLMM131



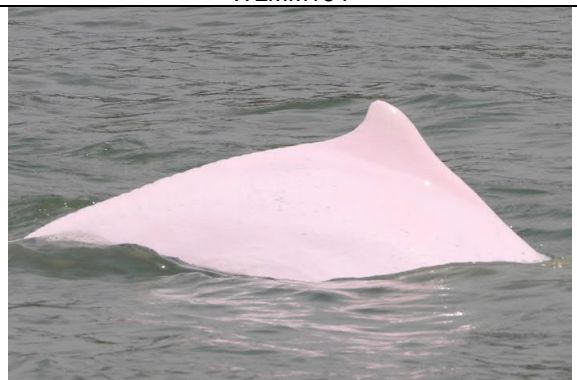
WLMM152



WLMM164



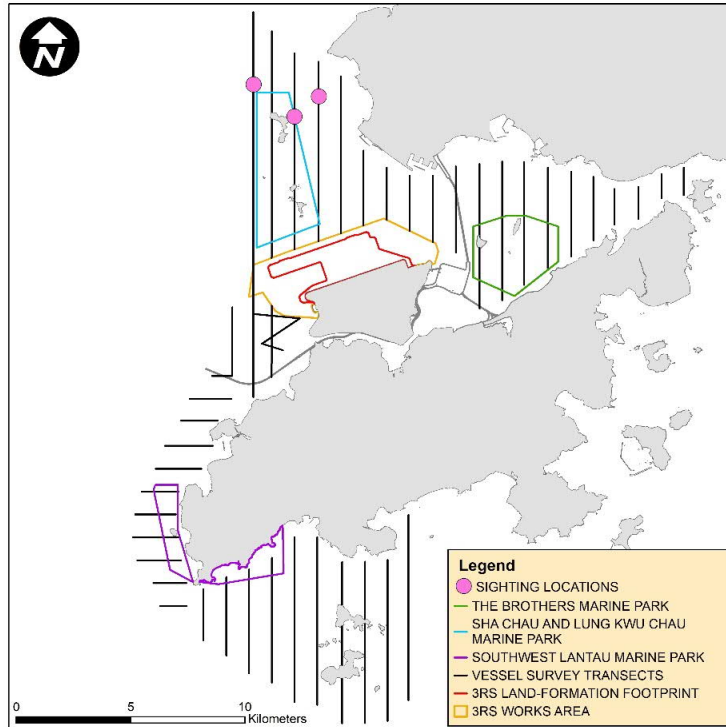
WLMM166



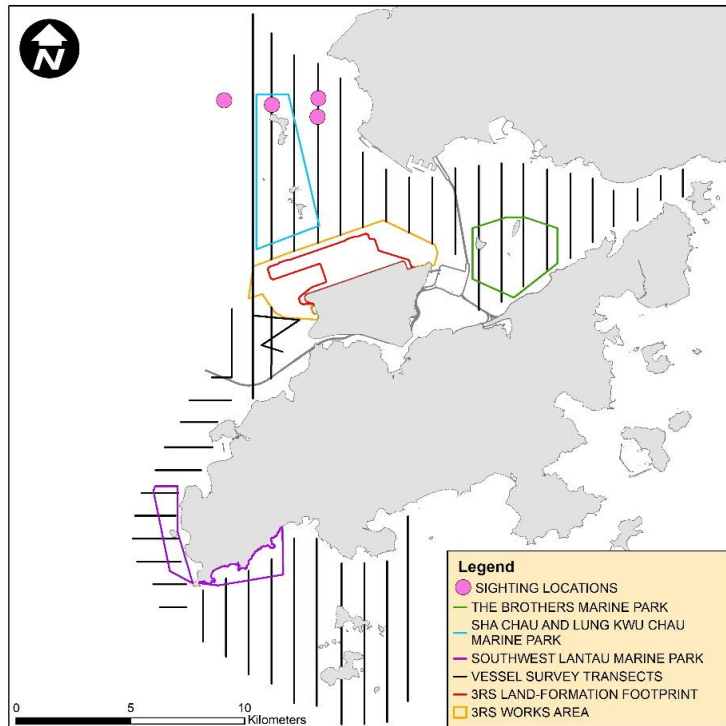
WLMM167

Photo Identification – Re-sighting Locations

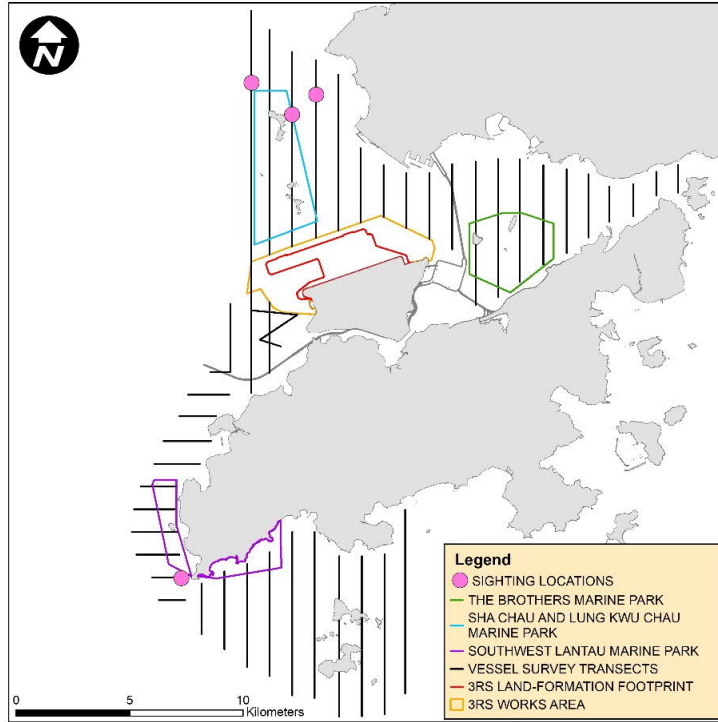
NLMM009



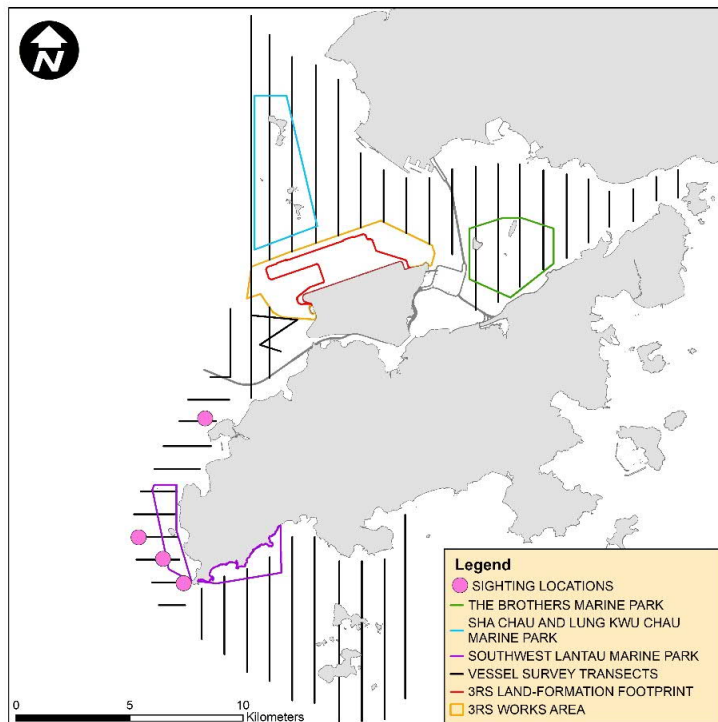
NLMM013



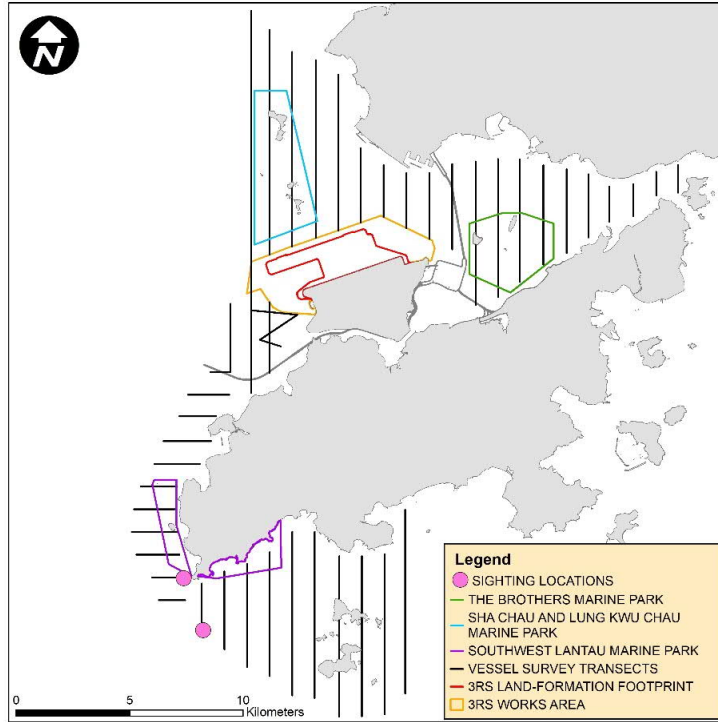
NLMM015



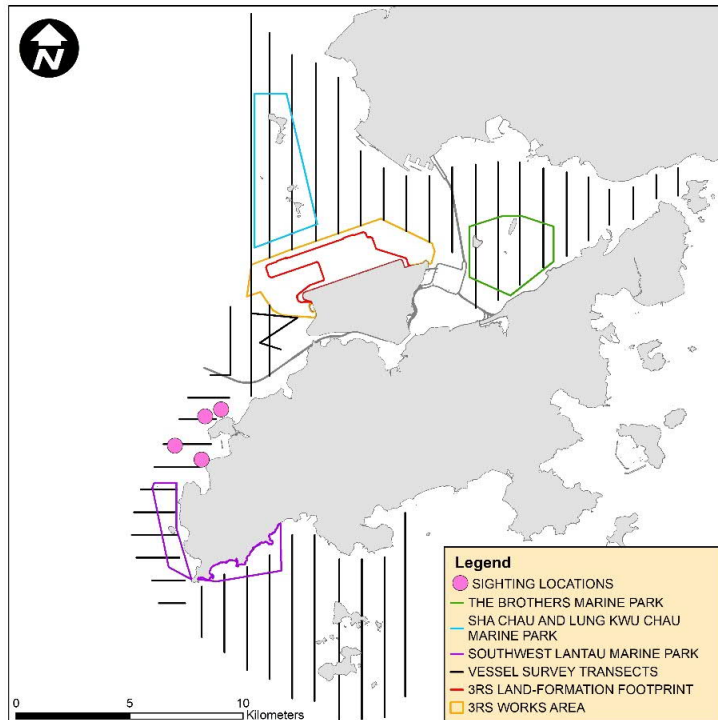
SLMM003



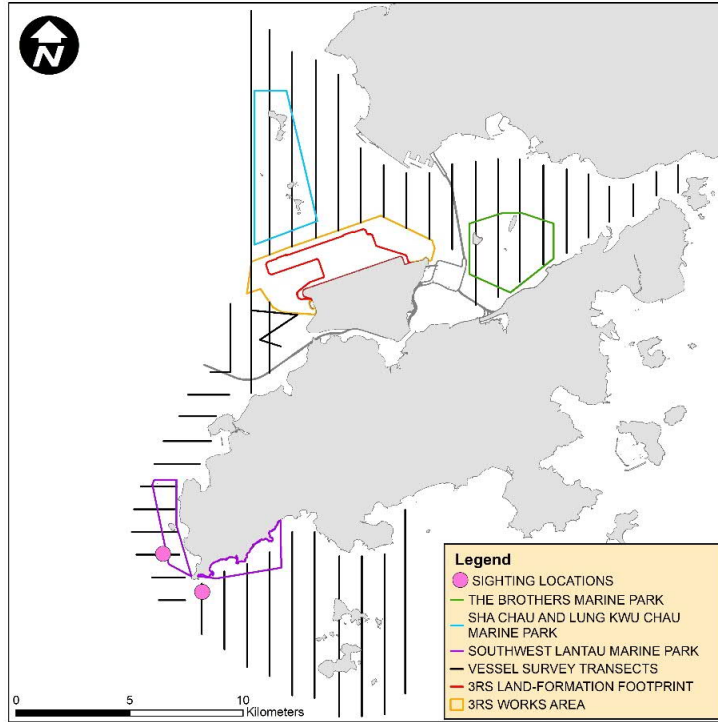
SLMM007



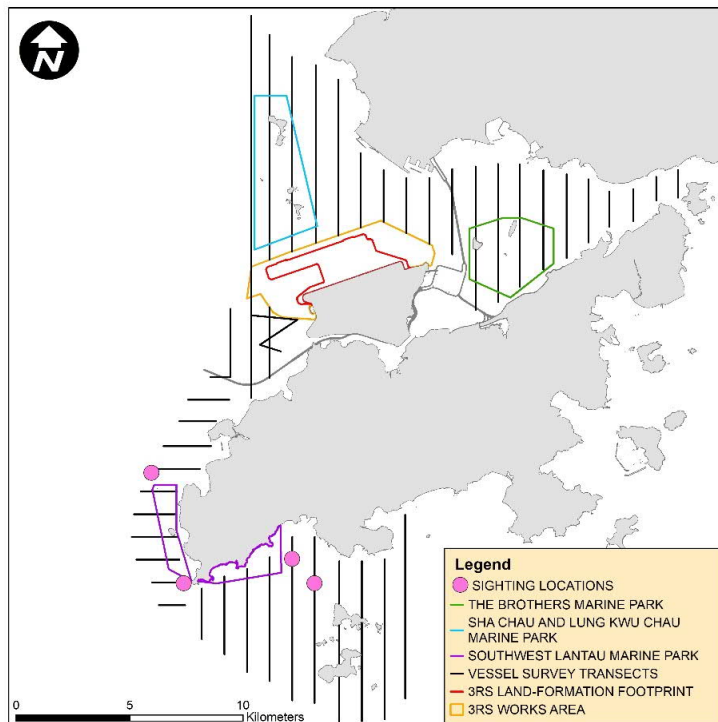
SLMM010



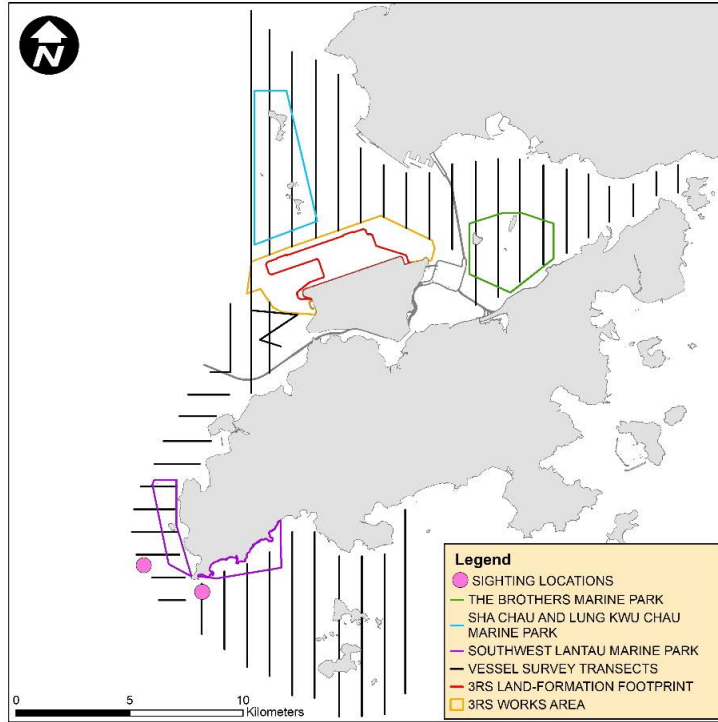
SLMM012



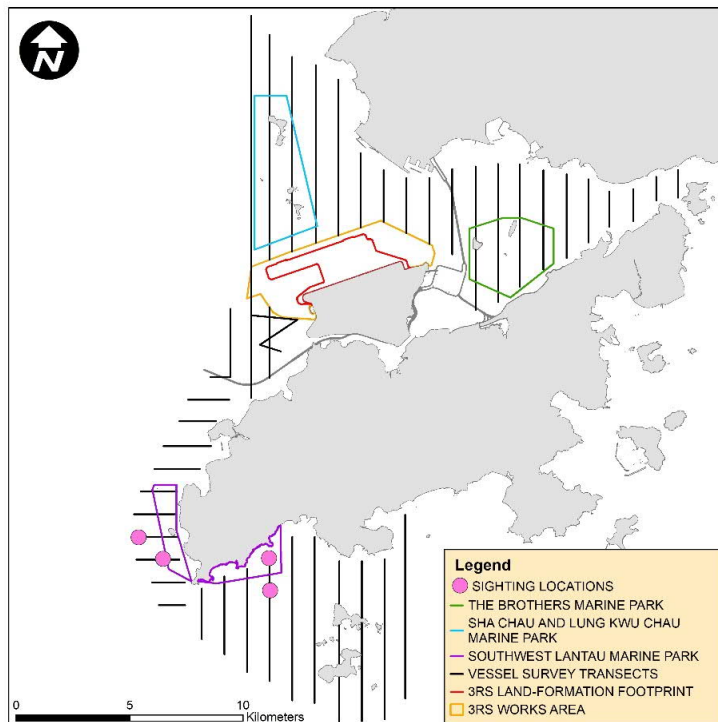
SLMM014



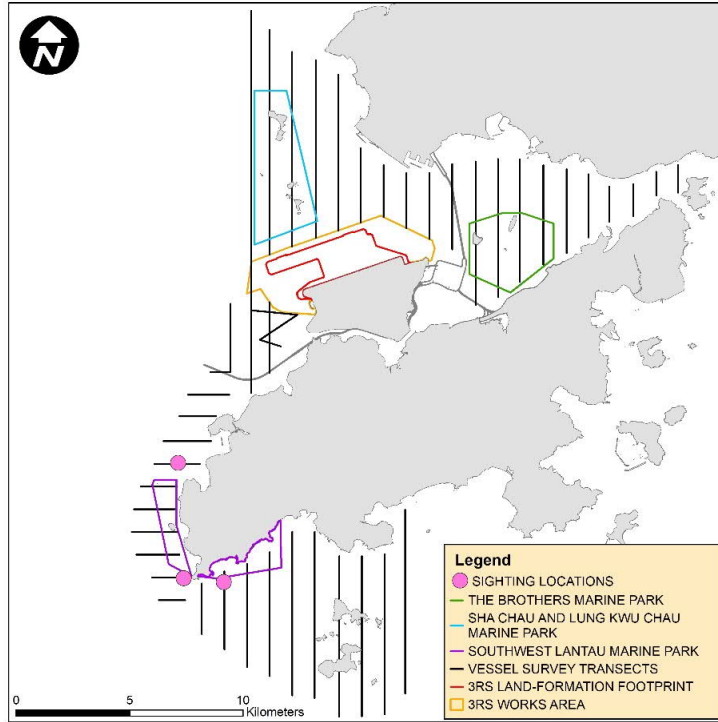
SLMM023



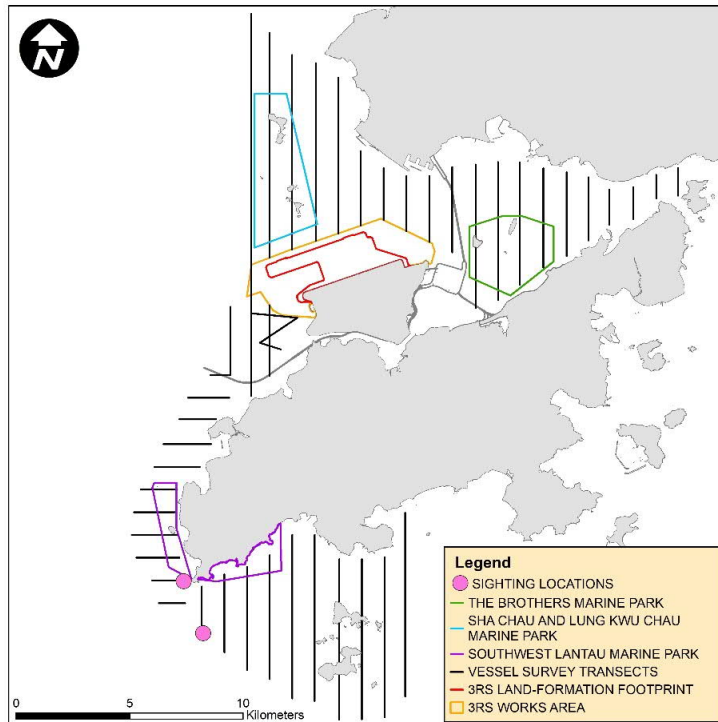
SLMM037



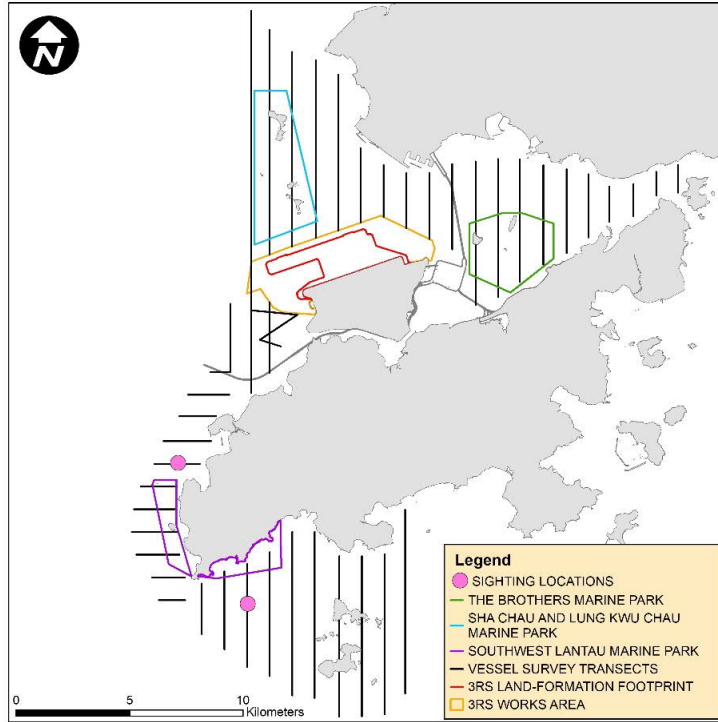
SLMM064



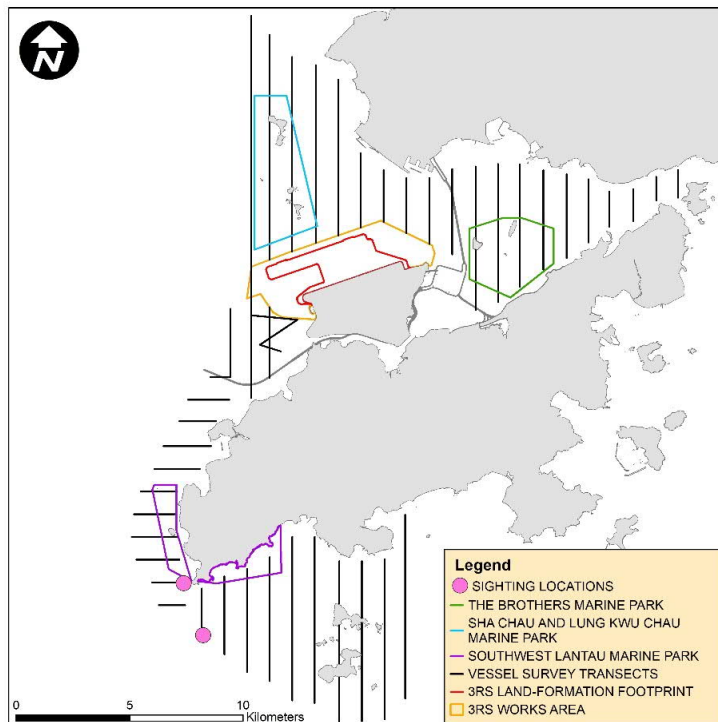
SLMM073



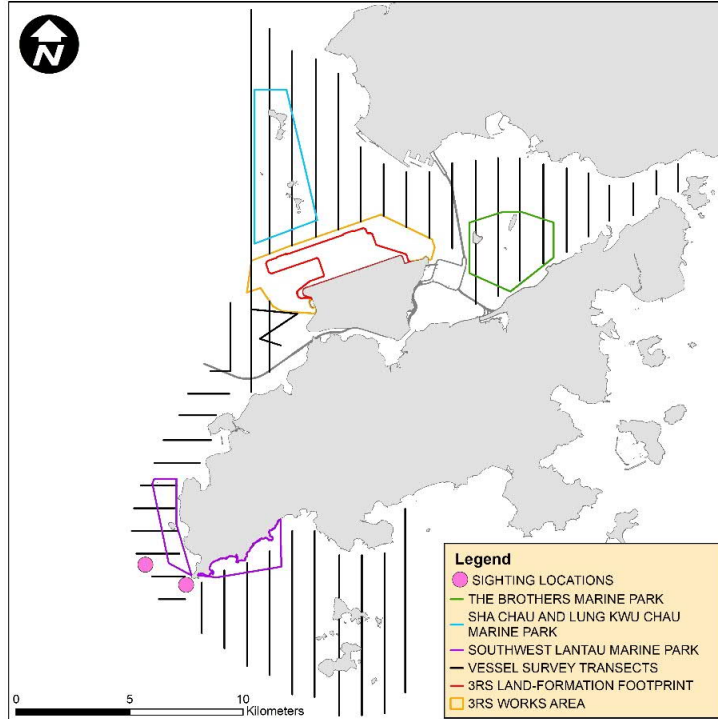
WLMM001



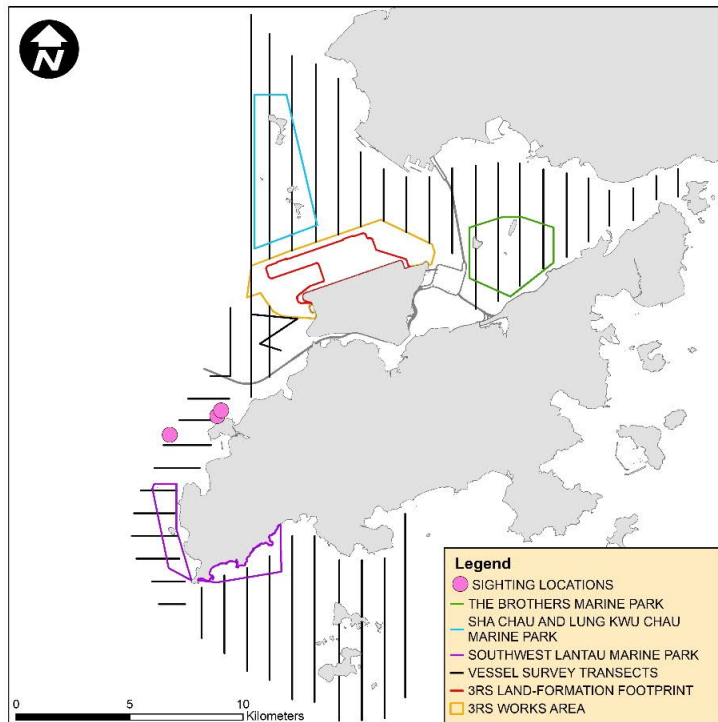
WLMM007



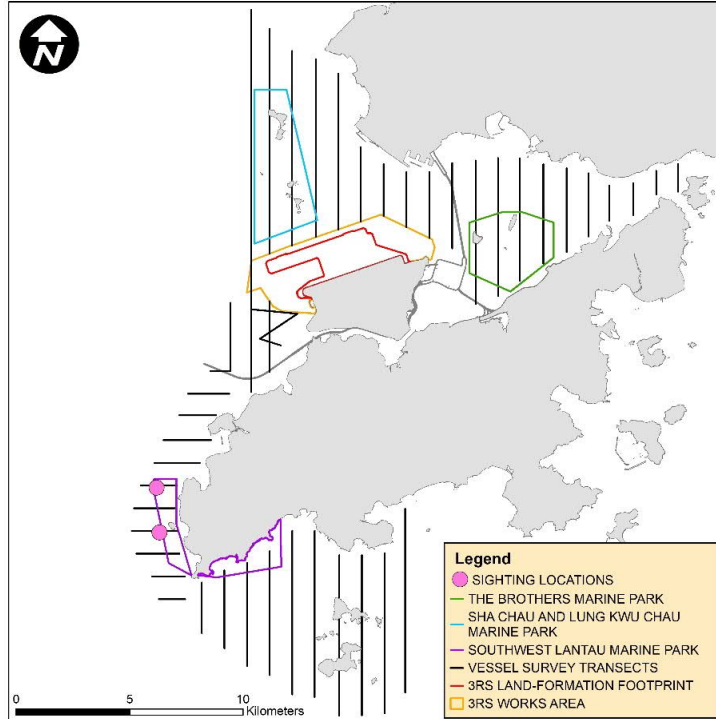
WLMM028



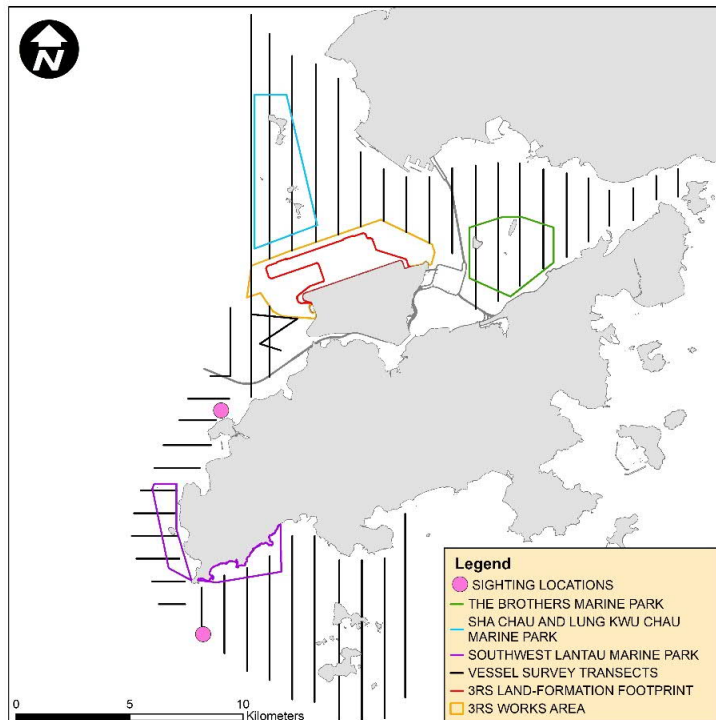
WLMM043



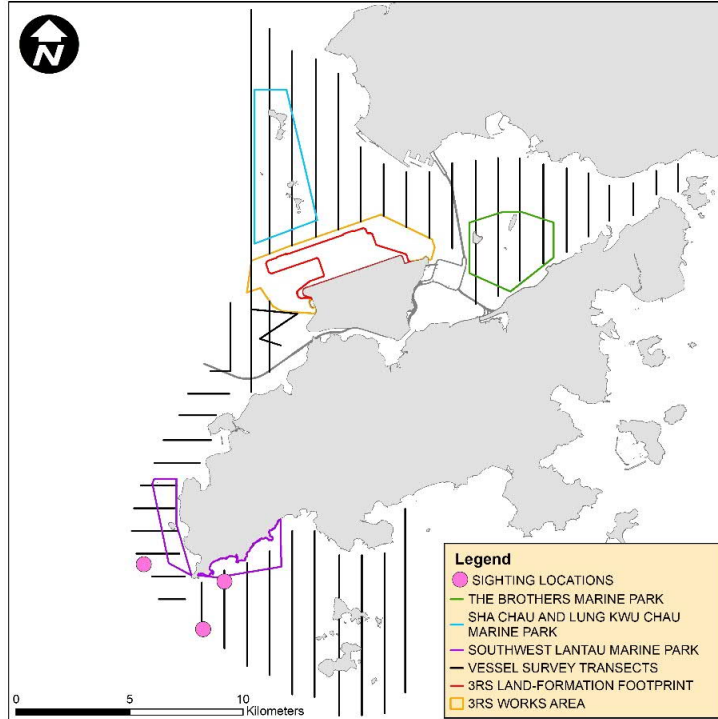
WLMM063



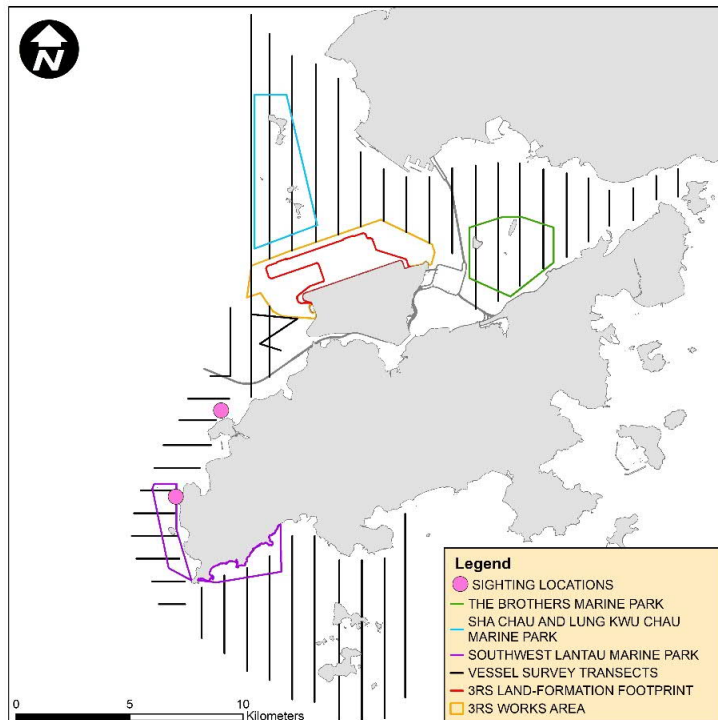
WLMM067



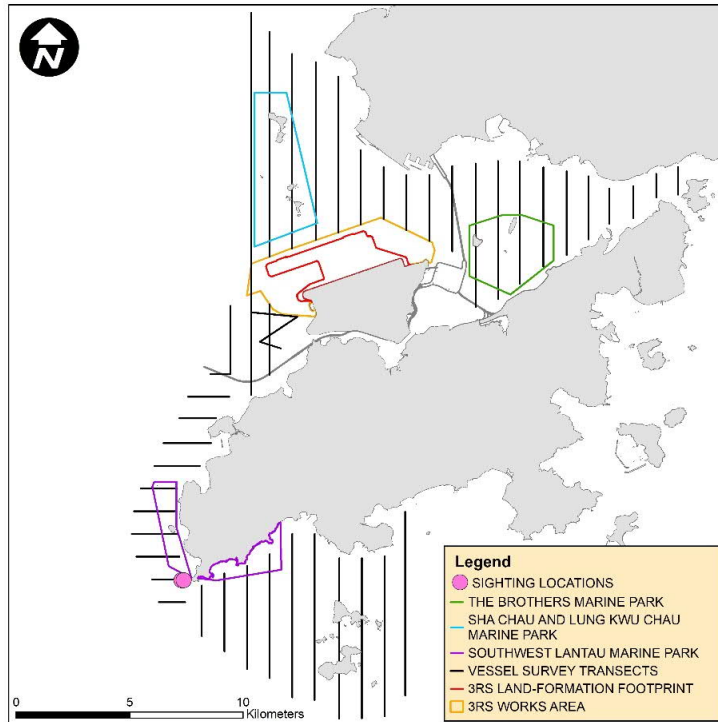
WLMM073



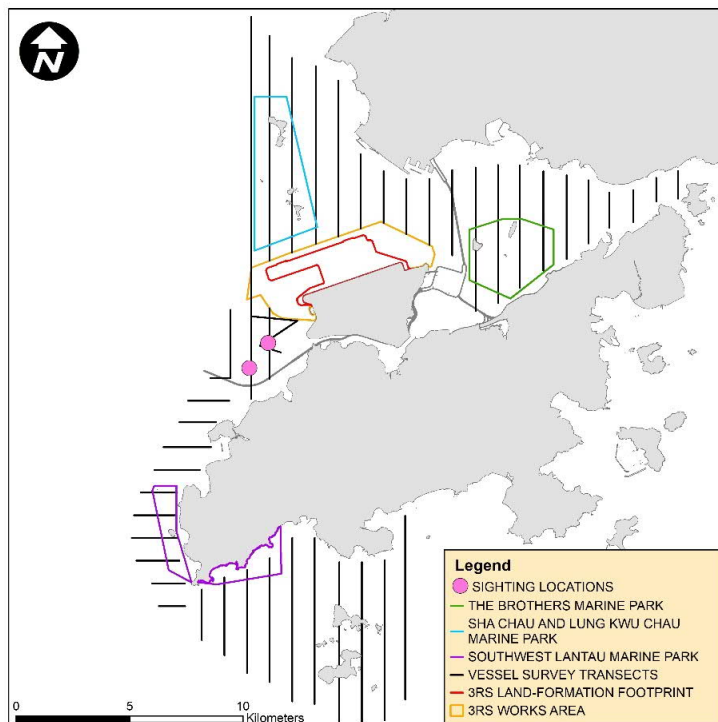
WLMM076



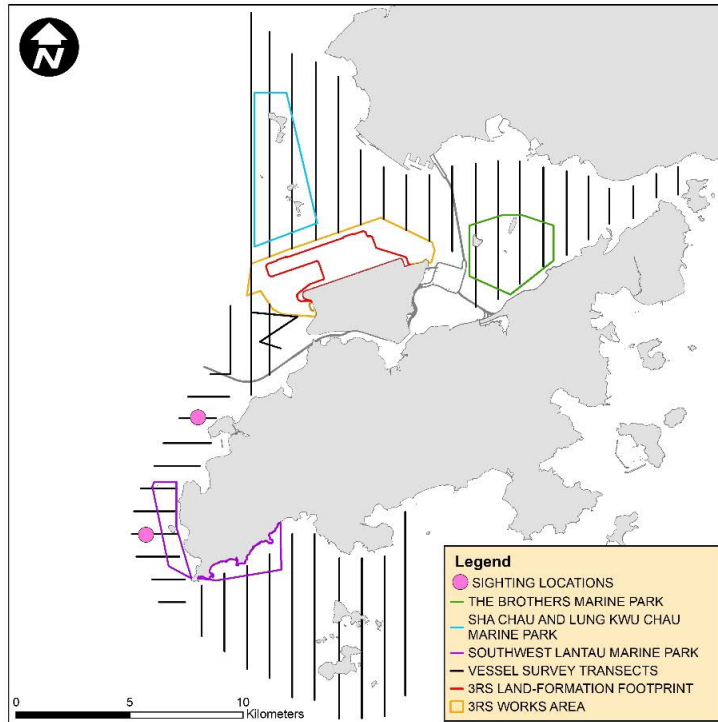
WLMM079



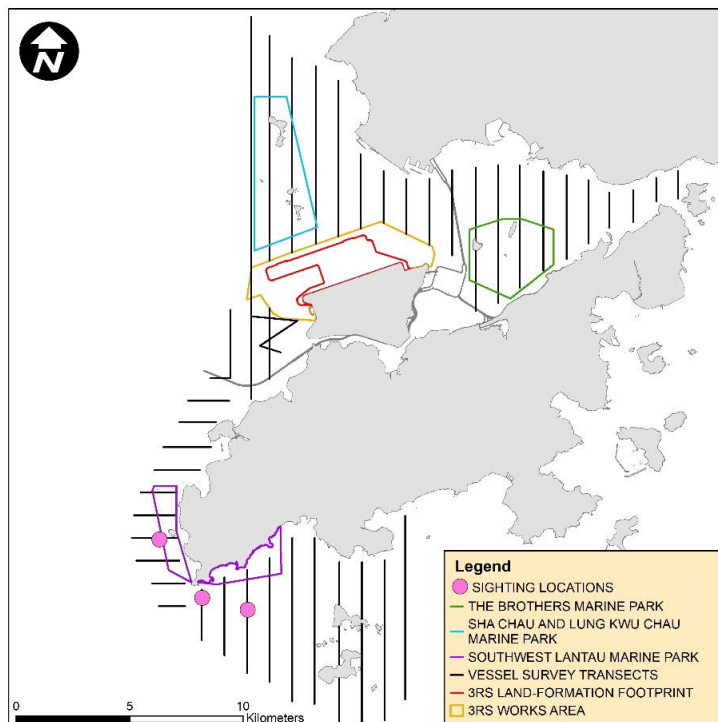
WLMM089



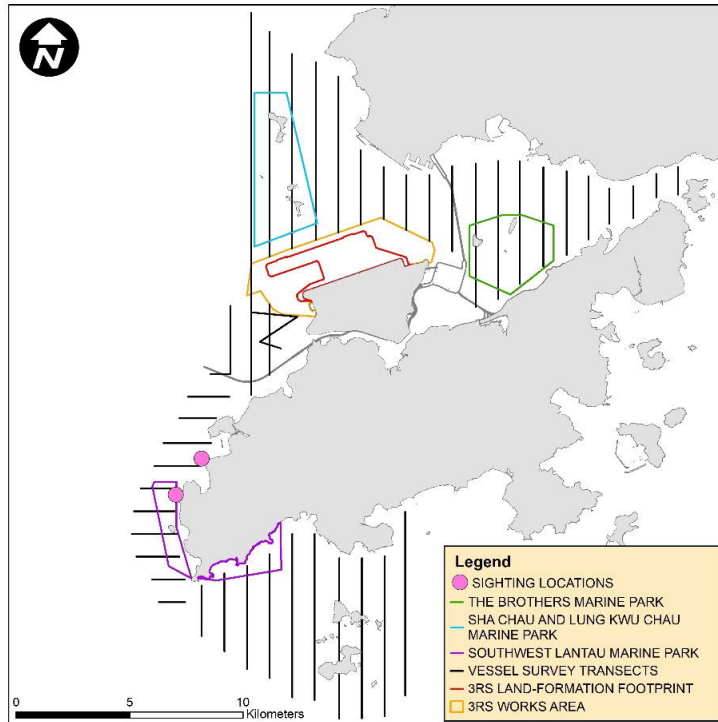
WLMM092



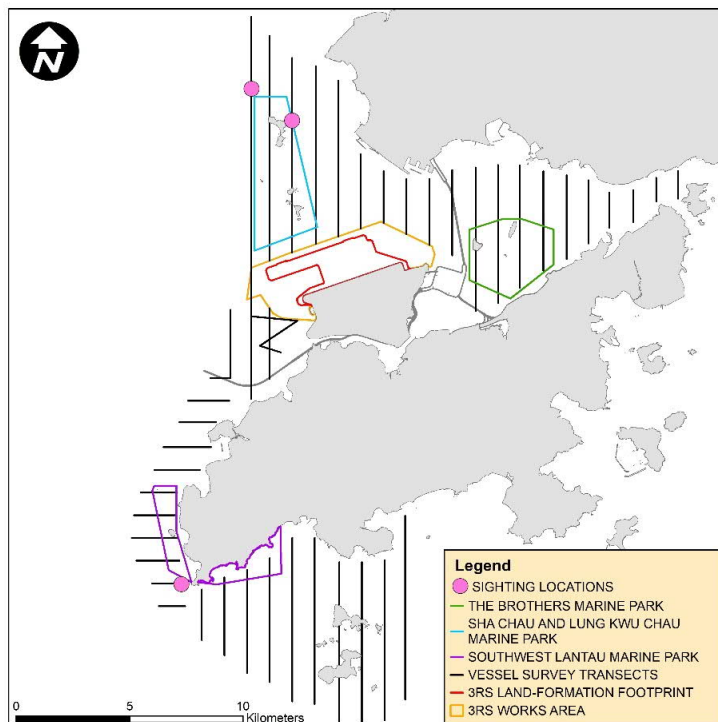
WLMM114



WLMM131



WLMM164



CWD Land-based Theodolite Tracking**CWD Groups by Survey Date**

Date	Station	Start	End	Duration	Beaufort	Visibility	No. of Focal Follow	Dolphin Group Size
12/Jul/21	Lung Kwu Chau	8:51	14:51	6:00	2	1	1	2
27/Jul/21	Sha Chau	10:47	16:47	6:00	2	2-3	0	0
13/Aug/21	Sha Chau	11:05	17:05	6:00	2-3	1-2	0	0
23/Aug/21	Lung Kwu Chau	9:11	14:11	6:00	1-2	1	0	0
3/Sep/21	Lung Kwu Chau	9:09	15:09	6:00	1-2	1	0	0
9/Sep/21	Sha Chau	10:59	16:59	6:00	1-2	3-4	0	0

Visibility: 1=Excellent, 2=Good, 3=Fair, 4=Poor

Daily Flow Monitoring Record of Sewage Pumping Station 1 (SPS1)

Daily Flow Monitoring Record of Sewage Pumping Station 1 (SPS1)

Date	Daily Flow at SPS1 (in m³/day)
1-Jul-21	7,188
2-Jul-21	9,772
3-Jul-21	18,645
4-Jul-21	11,906
5-Jul-21	12,580
6-Jul-21	12,580
7-Jul-21	9,772
8-Jul-21	13,478
9-Jul-21	16,960
10-Jul-21	7,638
11-Jul-21	16,399
12-Jul-21	11,794
13-Jul-21	11,457
14-Jul-21	15,276
15-Jul-21	14,602
16-Jul-21	8,424
17-Jul-21	17,971
18-Jul-21	14,602
19-Jul-21	11,794
20-Jul-21	12,243
21-Jul-21	20,218
22-Jul-21	16,286
23-Jul-21	14,939
24-Jul-21	15,837
25-Jul-21	17,747
26-Jul-21	14,489
27-Jul-21	16,960
28-Jul-21	14,489
29-Jul-21	16,960
30-Jul-21	9,547
31-Jul-21	21,902
Jul - 21 Daily Avg	13,989

Daily Flow Monitoring Record of Sewage Pumping Station 1 (SPS1)

Date	Daily Flow at SPS1 (in m³/day)
1-Aug-21	14,714
2-Aug-21	14,826
3-Aug-21	13,815
4-Aug-21	14,040
5-Aug-21	16,174
6-Aug-21	12,804
7-Aug-21	13,703
8-Aug-21	14,152
9-Aug-21	15,163
10-Aug-21	15,837
11-Aug-21	16,848
12-Aug-21	14,602
13-Aug-21	12,243
14-Aug-21	16,960
15-Aug-21	14,714
16-Aug-21	14,939
17-Aug-21	12,355
18-Aug-21	11,794
19-Aug-21	16,062
20-Aug-21	13,029
21-Aug-21	12,804
22-Aug-21	15,500
23-Aug-21	17,747
24-Aug-21	12,243
25-Aug-21	15,051
26-Aug-21	11,007
27-Aug-21	14,714
28-Aug-21	13,591
29-Aug-21	12,243
30-Aug-21	13,141
31-Aug-21	17,565
Aug - 21 Daily Avg	14,335

Daily Flow Monitoring Record of Sewage Pumping Station 1 (SPS1)

Date	Daily Flow at SPS1 (in m³/day)
1-Sep-21	13,928
2-Sep-21	13,928
3-Sep-21	10,446
4-Sep-21	11,344
5-Sep-21	14,040
6-Sep-21	11,007
7-Sep-21	16,062
8-Sep-21	14,265
9-Sep-21	11,681
10-Sep-21	17,634
11-Sep-21	12,131
12-Sep-21	14,040
13-Sep-21	12,355
14-Sep-21	15,949
15-Sep-21	11,569
16-Sep-21	15,163
17-Sep-21	12,018
18-Sep-21	12,917
19-Sep-21	12,468
20-Sep-21	17,073
21-Sep-21	10,558
22-Sep-21	13,478
23-Sep-21	14,826
24-Sep-21	11,232
25-Sep-21	14,265
26-Sep-21	13,928
27-Sep-21	12,804
28-Sep-21	13,366
29-Sep-21	14,826
30-Sep-21	14,152
Sep - 21 Daily Avg	13,448